

Aka-Brief #17 Nitrasyonlu Çelik

1



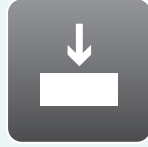
Rhaco Grit
P220



Su



300 rpm



3 0 N Düzgünleşene kadar



BF, 50x

2



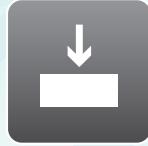
Rhaco Grit
P500



Su



300 rpm

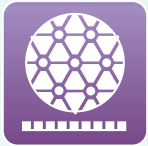


3 0 N 1 : 0 0 d a k



BF, 50x

3



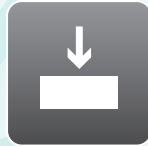
Allegan 3



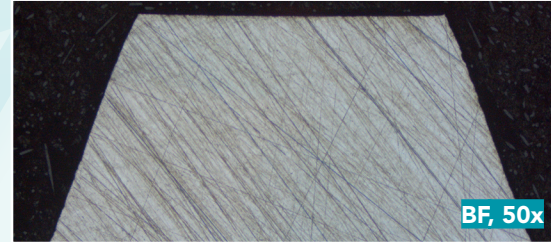
DiaMaxx
Poly 9 µm



150 rpm



3 5 N 4 : 0 0 d a k



BF, 50x

4



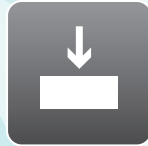
Ramda



DiaMaxx
Poly 3 µm



150 rpm



3 0 N 4 : 0 0 d a k



BF, 50x

5



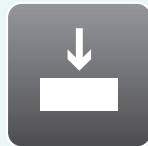
Napal



DiaMaxx
Poly 1 µm



150 rpm



2 0 N 1 : 0 0 d a k



BF, 50x*

Belirtilen zamanlar 300mm lik sistemler için ve baskı güçleri ise 40mm çapında tek numune içindir

250mm lik sistemler için zamanlar %30, 200mm lik sistemler için ise %100 arttırılmalıdır.

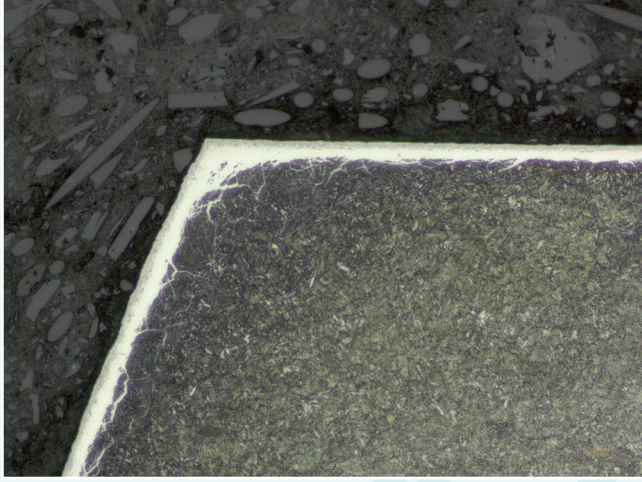
Daha geniş numuneler için baskı gücü arttırılmalı, daha küçük numuneler için ise azaltılmalıdır.

Zaman ve baskı gücü donanımına göre değişiklik gösterebilir.

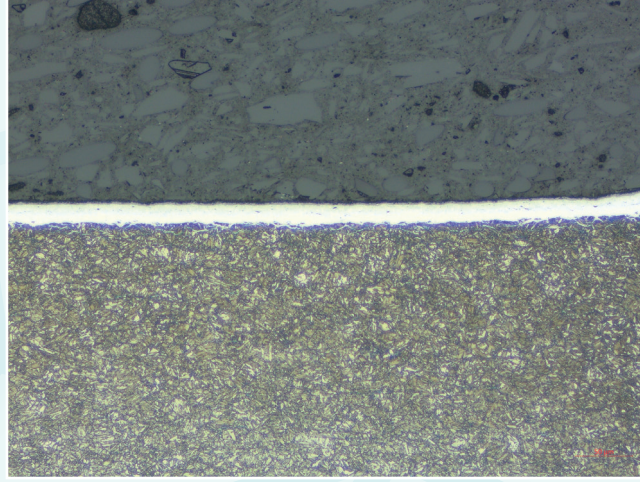
* 3% Nital ile dağlama sonrası mikroyapı.

Aka-Brief #17 Nitrasyonlu Çelik

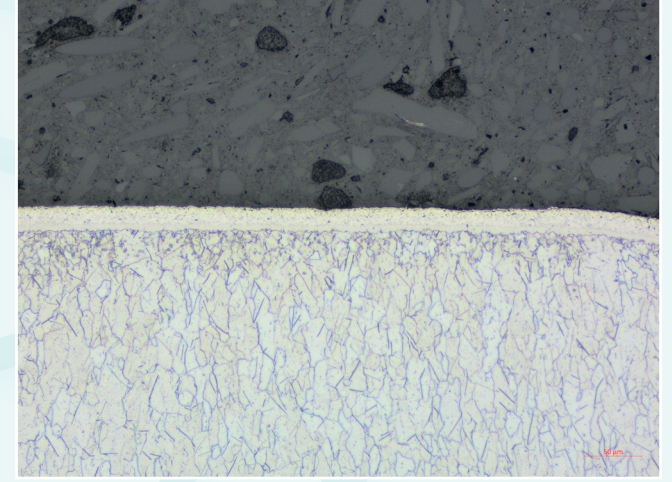
NIHAİ SONUÇ



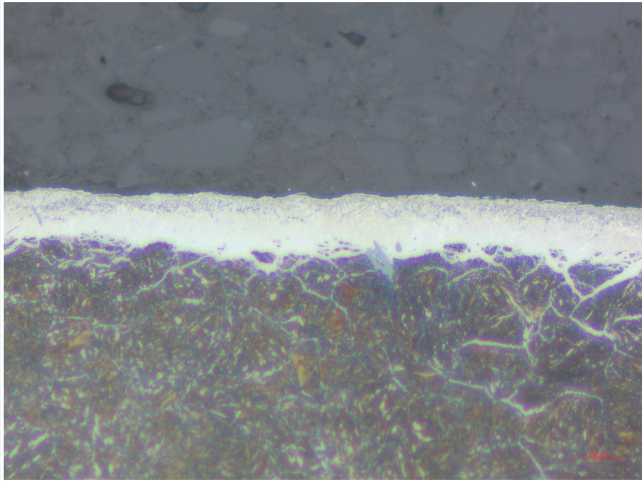
Etched with 3 % Nital, BF, 200x



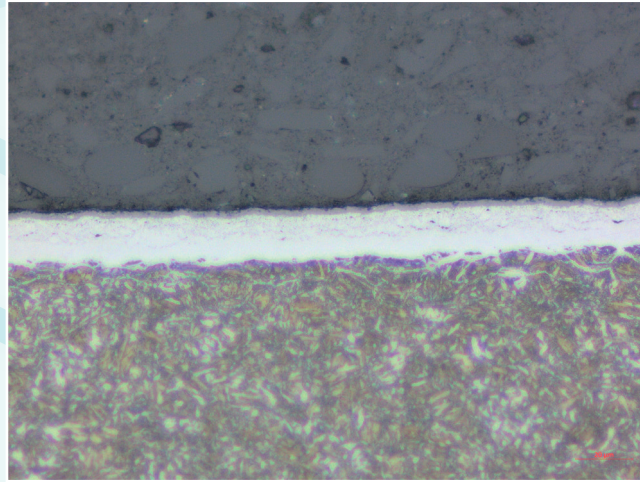
Etched with 3 % Nital, BF, 200x



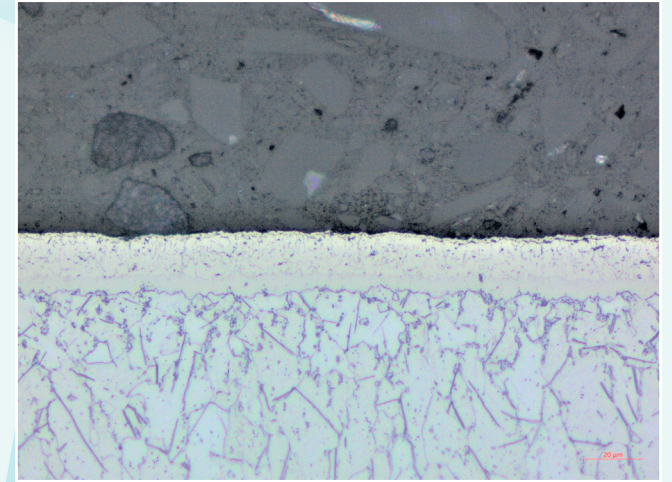
Etched with 3 % Nital, BF, 200x



Etched with 3 % Nital, BF, 500x



Etched with 3 % Nital, BF, 500x



Etched with 3 % Nital, BF, 500x