


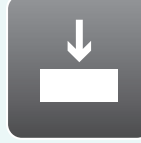

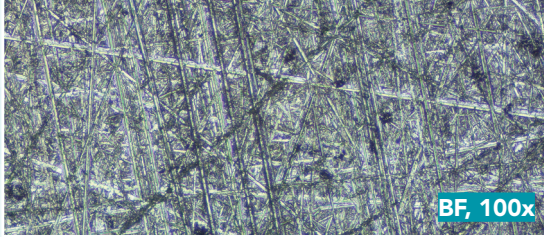



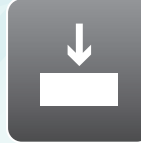

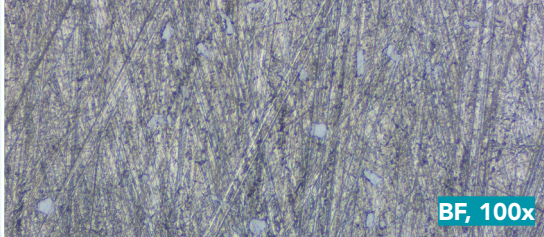





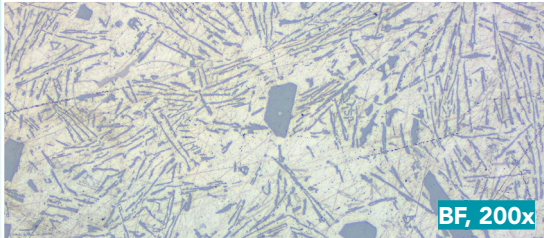





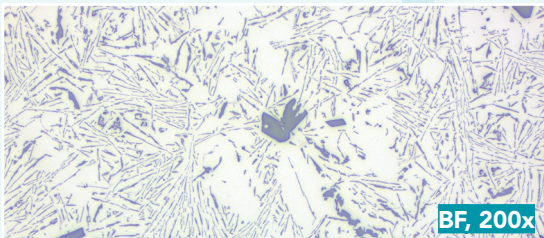


Aka-Brief #4 Alüminyum Alaşımları

1	 Rhaco Grit P320	 Su	 300 rpm	 2.5 N	 Düğüneşene kadar	 BF, 100x
2	 Largan 9	 DiaMaxx Poly 9 µm	 150 rpm	 3.5 N	 5 : 0 0 dak	 BF, 100x
3	 Moran-U	 DiaDoublo Poly 3 µm	 150 rpm	 2.5 N	 4 : 0 0 dak	 BF, 200x
4	 Chemal	 Fumed Silica 0.2 µm Alkaline	 150 rpm	 2.0 N	 2 : 0 0 dak	 BF, 200x

Belirtilen zamanlar 300mm lik sistemler için ve baskı güçleri ise 40mm çapında tek numune içindir

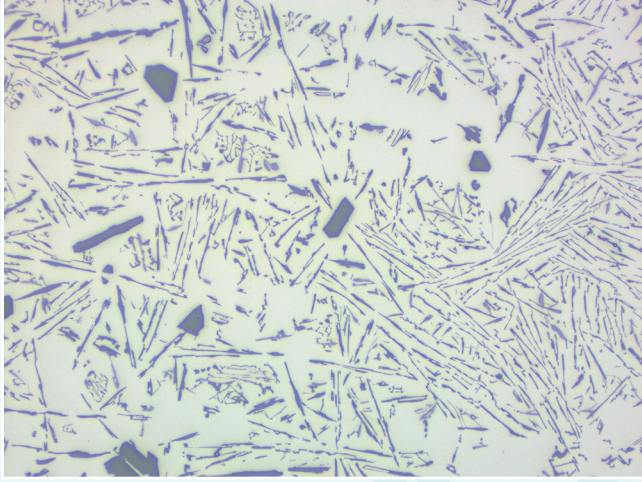
250mm lik sistemler için zamanlar %30, 200mm lik sistemler için ise %100 arttırılmalıdır.

Daha geniş numuneler için baskı gücü arttırılmalı, daha küçük numuneler için ise azaltılmalıdır.

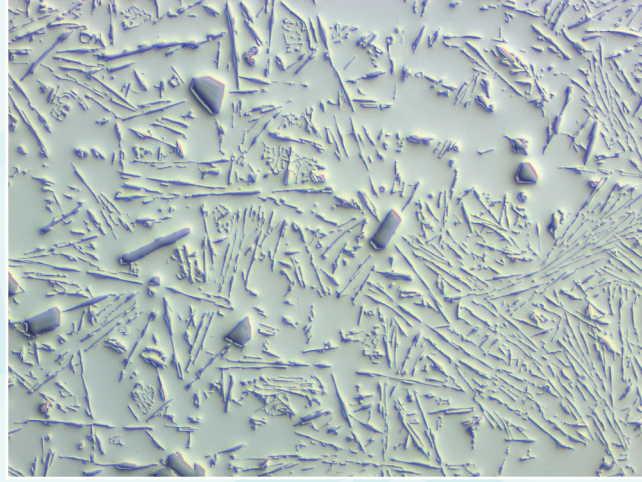
Zaman ve baskı gücü donanımına göre değişiklik gösterebilir.

Aka-Brief #4 Alüminyum Alaşımları

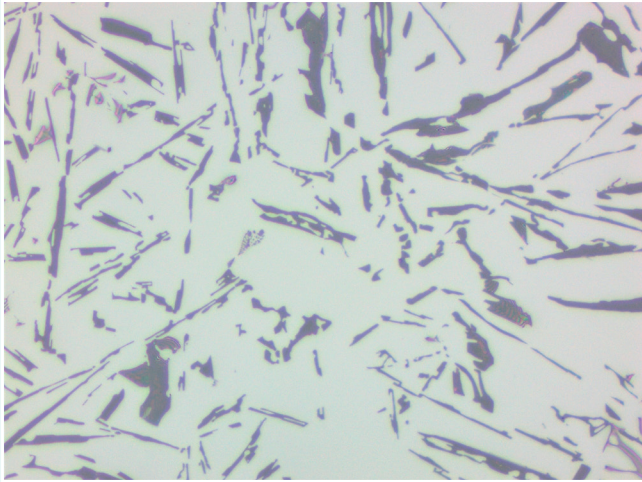
NIHAİ SONUÇ



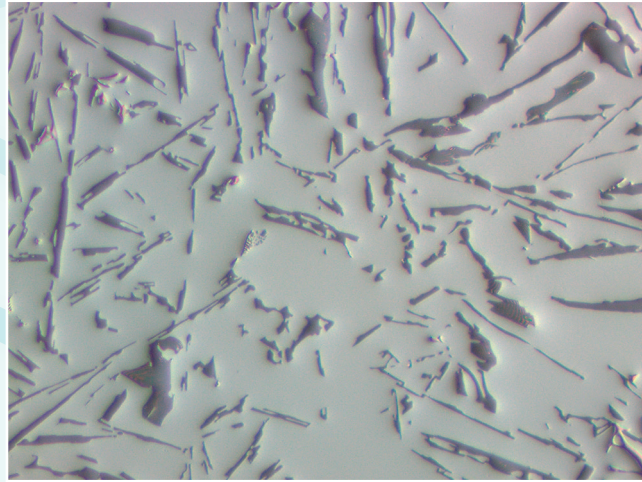
BF, 200x



DIC, 200x



BF, 500x



DIC, 500x