

Vision Measuring Machines



JINNUOSH

FOCUS ON PRECISION DETECTION



COMPANY PROFILES

Guangdong Jinuosh Technology Co., Ltd. is a high-tech enterprise engaged in the research and development, production and sales of video measuring machine, flashing measuring machine, measuring microscope and other testing equipmen, with a technical team and management team specializing in the development of advanced products and process research.

Always follow: " customer first, quality first, perfect" quality policy, whole-heartedly for domestic and foreign customers to provide beautiful shape, excellent performance, reasonable price, user satisfaction' s testing equipment products, the products are mainly exported, our company has won the trust and praise of many customers by providing all-round assistance, high quality and sincere service. The company has gradually established the leading position in the testing instrument industry in China. In the domestic and international markets to establish a good brand, with its strong strength and good reputation in the industry, to become the world's top brands of excellent partners.

Contents

Manual Vision Measuring Machine

E Series

P1



Semi-auto Video Measuring System

P2



Auto Video Measuring System

C Series

P3

G Series

P4-P5



Flash Measuring Machine

T Series

P6

ST Series

P6

FMV Series

P7



Measuring Microscope Instrument

X Series

P8

MU series

P8

MMI series

P9



Manual Vision Measuring Machine

E Series

Specification

MODEL	E200	E300	E400	E500
X-Y-Z Stroke (mm)	200×100×200	300×200×200	400×300×200	500×400×200
Granite Size (mm)	370×230	450×350	550×460	700×500
Stage Glass Size (mm)	228×128	328×228	428×328	528×428
Max Loading Weight	20KG			
Observation and Image	1/2 "GIGE Color Camera,1.3MP			
	Working distance:90mm			
	Zoom Lens:0.7X- 4.5X			
	Monitor magnification :40X-250X			
	Precision image 2.5D measurement software			
X/Y Accuracy	$(3+L/200)\mu\text{m}$ (L= is the measured length,unit mm)			
Z Accuracy	$(5+L/200)\mu\text{m}$ (L= is the measured length,unit mm)			
Lens position identifier	Double laser pointer			
Illumination Unit	White LED ring light source + green LED transmission parallel light source			
Power Source	220V (AC) 50HZ			
Dimensions (mm)	467×577×900	538×735×935	638×890×975	748×1040×975
Net Weight	95KG	135KG	217KG	297KG

Manual machine option

Z Axis	250mm 300mm 350mm 400mm(Other options)
Lens	Motorized zoom lens 0.7-4.5X + coaxial light source
	Motorized zoom lens 0.7-4.5X + coaxial light source + polarized light
	Motorized zoom lens 0.58-7.5X without coaxial light source
	Motorized zoom lens 0.58-7.5X + coaxial light source
	Motorized zoom lens 0.58-7.5X + coaxial light source + polarized light
	Manual zoom lens 0.58-7.5X
	Manual zoom lens 0.58-7.5X + coaxial light source
	Manual zoom lens 0.58-7.5X + coaxial light source + polarized light
Touch Probe	Renishaw or Other options
Ring light	White LED 4-ring 8-area programmable ring light source
Rotating stage	Standard

*Custom Base your requirement

Features

- Green bottom light source will makes the imaging effect clearer.
- Can find the specific position of the measured workpiece through the laser pointer, can adapt to the complex workpiece measurement.
- High resolution HD color camera.
- Can add Z-axis auto focus, realize the powerful function of semi-automata on manual machine.
- There are many ways to establish the coordinate system, the coordinate system translation, rotation is very convenient.
- High precision granite base, column, to ensure high stability and rigidity.
- Imaging instrument measuring instrument software, powerful, simple measurement.



Semi-auto Video Measuring System

Features

- Z axis: auto ; lens: auto zoom
- High precision granite base, column, to ensure high stability and rigidity.
- Imaging instrument measuring instrument software, powerful, easy measurement.
- A variety of data processing, display, input, output functions.
- Can find the specific position of the measured work piece through the laser pointer, can adapt to the complex work piece measurement.
- Software assisted dimming, so that users can know whether the light is over-saturated.
- Bottom light source lamp makes the imaging effect clearer.



Specification

MODEL	M2010H	M3020H	M4030H	M5040H
X-Y-Z Stroke (mm)	200×100×200	300×200×200	400×300×200	500×400×200
Granite Size (mm)	370×230	450×350	550×460	700×500
Stage Glass Size (mm)	228×128	328×228	428×328	528×428
Max Loading Weight	20KG			
Observation and Image	1/3" CMOS color camera			
	Working distance:90mm			
	Zoom Lens:0.7X- 4.5X			
	Monitor magnification :28X-164X			
	JINUOSH 2.5D Measurement Software			
X/Y Accuracy	(3+L/200)μm (L= is the measured length,unit mm)			
Z Accuracy	(5+L/200)μm (L= is the measured length,unit mm)			
Illumination Unit	White LED Transmitted Illumination			
Power Source	220V (AC) 50HZ			
Dimensions (mm)	467×577×900	538×735×935	638×890×975	748×1040×975
Net Weight	95KG	135KG	217KG	297KG

Optional Specifications

Z Axis	250mm 300mm 350mm 400mm(Other options)
Lens	Motorized zoom lens 0.7-4.5X + coaxial light source
	Motorized zoom lens 0.7-4.5X + coaxial light source + polarized light
	Motorized zoom lens 0.58-7.5X without coaxial light source
	Motorized zoom lens 0.58-7.5X + coaxial light source
	Motorized zoom lens 0.58-7.5X + coaxial light source + polarized light
	Manual zoom lens 0.58-7.5X
	Manual zoom lens 0.58-7.5X + coaxial light source
	Manual zoom lens 0.58-7.5X + coaxial light source + polarized light
Touch Probe	Renishaw or Other options
Ring light	White LED 4-ring 8-area programmable ring light source
Computer	Lenovo or other

*Custom Base your requirement

Auto Video Measuring System

C Series

Specification

MODEL	C300H	C400H	C500H
X-Y-Z Stroke (mm)	300×200×200	400×300×200	500×400×200
Granite size (mm)	580×360	720×490	900×610
Stage Glass Size (mm)	348×238	448×340	548×448
Max Loading Weight	20KG		
Observation and Image	1/1.7 "GIGE Color Camera,2 MP		
	Working distance:90mm		
	Zoom Lens:0.7X- 4.5X		
	Monitor magnification :28X-164X		
X/Y Accuracy	JINUOSH 3D Automatic Measurement Software		
	Linear Accuracy:(2.8+L/200)μm <small>(L=length between two arbitrary points mm)</small>		
Z Accuracy	Vector Accuracy:(3.5+L/200)μm <small>(L=length between two arbitrary points mm)</small>		
	≤5μm (standard checking) <small>(L=length between two arbitrary points mm)</small>		
Illumination Unit	White LED transmission light source		
	White LED 4-ring 8-area programmable ring light source		
Power Source	220V (AC) 50HZ		
Dimensions (mm)	782×882×1617	875×1142×1591	1015×1372×1596
Net Weight	310KG	408KG	510KG

Optional Specifications

Z Axis	250mm 300mm 350mm 400mm(Other options)
Z Axis(μm)	Linear encoder 0.5 Linear encoder0.1
X-Y Axis(μm)	Linear encoder 0.1
Ring Source	7-ring 8-region 32-phase ring light source
Lens	Motorized zoom lens 0.7-4.5X + coaxial light source
	Motorized zoom lens 0.7-4.5X + coaxial light source+ polarized light
	Motorized zoom lens 0.58-7.5X without coaxial light source
	Motorized zoom lens0.58-7.5X+coaxial light source
Touch Probe	Motorized zoom lens0.58-7.5X+coaxial light source + polarized light
	Renishaw or Other options
Computer	DELL or Other options
Software	MJ
Laser	Keyence-LK-G30 Omron ZW-7020S

*Custom Base your requirement

Features

- Integrated machine, stable, safe and reliable.
- Quick AF, automatic edge.
- Wonderful programming and automatic measurement function.
- Grinding grade screw transmission, accurate position ,high movement precision , High precision granite base, working platform, pillar, ensure machine stability.
- Three-axis servo closed-loop control system.
- Software is convenient in operation, and conforming to international Microscope Office software operating habits.



Auto Video Measuring System

G Series Column type



Features

- High precision automatic measurement, automatic lens, high precision automatic variable times.
- Air bearing guide rail, no wear and tear; Precision grinding lead screw, high speed, no clearance, sensitive and reliable, accurate positioning, high motion precision.
- Joystick control automatic functions: automatic focus, automatic measurement, automatic edge, lamp light adjustment automatically, automatic switch ratio, ensure the high efficiency of measurement.
- Software is convenient in operation, and conforming to international Microscope Office software operating habits.
- Four axis automatic loop control.
- High-resolution high-definition color camera.
- CNC program high editable.
- High precision granite base, working platform, pillar, ensure the long-term stability.

Specification

MODEL	G300	G400	G500
X-Y-Z Stroke (mm)	300×200×200	400×300×200	500×400×200
Granite size (mm)	580×360	720×490	900×610
Stage Glass Size (mm)	348×238	448×340	548×448
Max Loading Weight	20KG		
Observation and Image	1/1.7" GIGE 2MP Color digital camera		
	Working distance:90mm		
	Zoom Lens:0.7X - 4.5X auto zoom lens		
	Integral 6.5:1 CNC zoom optics		
	Monitor magnification :40X-245X		
	JINUOSH 3D Automatic Measurement Software		
X/Y Accuracy	Linear Accuracy:(2.5+L/200)μm <small>(L=length between two arbitrary points mm)</small>		
	Vector Accuracy:(2.8+L/200)μm <small>(L=length between two arbitrary points mm)</small>		
Z Accuracy	≤5μm (Standard block test)		
Illumination Unit	Green LED transmission light source + coaxial light source		
	White LED 7 ring 8 region 32 phase programmable ring light source		
Power Source	220V (AC) 50HZ		
Dimensions (mm)	770×900×1610	875×1142×1591	1015×1372×1596
Net Weight	330KG	408KG	510KG

Auto Video Measuring System

G Series Bridge type

Specification

MODEL	G650	G850	G1000	G1200
X-Y-Z Stroke (mm)	550×650×200	650×850×200	800×1000×200	1000×1200×200
Stage Glass Size (mm)	668×698	768×898	918×1048	1118×1248
Max Loading Weight	20KG			
Observation and Image	1/1.7" GIGE 2MP Color digital camera			
	Working distance:90mm			
	Zoom Lens:0.7X - 4.5X auto zoom lens			
	Integral 6.5:1 CNC zoom optics			
	Monitor magnification :40X-245X			
X/Y Accuracy	Linear Accuracy:(2.8+L/200)μm <small>(L-is the measured length,unit:mm)</small>			
	Vector Accuracy:(3.5+L/200)μm <small>(L-is the measured length,unit:mm)</small>			
Z Accuracy	≤5μm (Standard block test)			
Illumination Unit	Green LED transmission light source + coaxial light source			
	White LED 7 ring 8 region 32 phase programmable ring light source			
Power Source	220V (AC) 50HZ			
Dimensions (mm)	1140×1395×1700	1240×1595×1700	1390×1745×1700	1620×2100×1700
Net Weight	870KG	970KG	1220KG	1620KG

G Series option

Z Axis	250mm 300mm 350mm 400mm(Other options)
Lens	Polarized light
	Motorized zoom lens 0.58-7.5X
	Motorized zoom lens 0.58-7.5X + coaxial light source
Touch Probe	Renishaw or Other options
	Non-contact displacement sensor
Software	MJ
Customized max stroke	2500mm

*Custom Base your requirement

Features

- High precision automatic measurement, automatic lens, high precision automatic variable times.
- Air bearing guide rail, no wear and tear; Precision grinding lead screw, high speed, no clearance, sensitive and reliable, accurate positioning, high motion precision.
- Joystick control automatic functions: automatic focus, automatic measurement, automatic edge, lamp light adjustment automatically, automatic switch ratio, ensure the high efficiency of measurement.
- Software is convenient in operation, and conforming to international Microscope Office software operating habits.
- Four axis automatic loop control.
- High-resolution high-definition color camera.
- CNC program high editable.
- High precision granite base, working platform, pillar, ensure the long-term stability.



Flash Measuring Machine

Features

- No positioning of the part is required.
- Simultaneous Measurements Performed in Seconds Measurements on up to dozens to hundreds of products in the field of vision can be completed in seconds, greatly reducing the resources spent on measurement work.
- Accurately detects and measures edges.
- Automatically reproduces lighting conditions for measurement.
- Autofocus eliminates focus variations.
- Large vision Easy to understand, as the entire part is visible.
- Stable detection with no fine adjustment required.

ST Series



Specification

MODEL	ST 80A	ST 100A	T100	T200	T300
Field of view (mm)	90×60	107×71	90×60	170×113	258×136
Working distance (mm)	160	160	260	280	280
Measurement accuracy (mm)	±3μm	±5μm			
Repetition accuracy	±1.5μm	±2μm			
Imaging device	5 million pixel CCD		20 million pixel CCD		
Lens	Unilateral telecentric lens		Bilateral telecentric lens		
Illumination unit	Parallel backlighting Circumferential surface light		Parallel backlighting Ring surface light		
Maximum workpiece height (mm)	50		100		
Lens depth of field (mm)	10		30		
Maximum stage loading	10KG		15KG		
Measuring speed	≤5 seconds (within 100 dimensions)		≤3 seconds (within 100 dimensions)		
Software	JN-AOS 2.0		JN-AOS 3.0		
Dimensions (mm)	650×430×950		600×500×1600		
Net Weight	50KG	58KG	160KG	190KG	
Power Source	AC100~240V 50/60Hz				

*Custom Base your requirement

T Series



Flash Measuring Machine

FMV Series

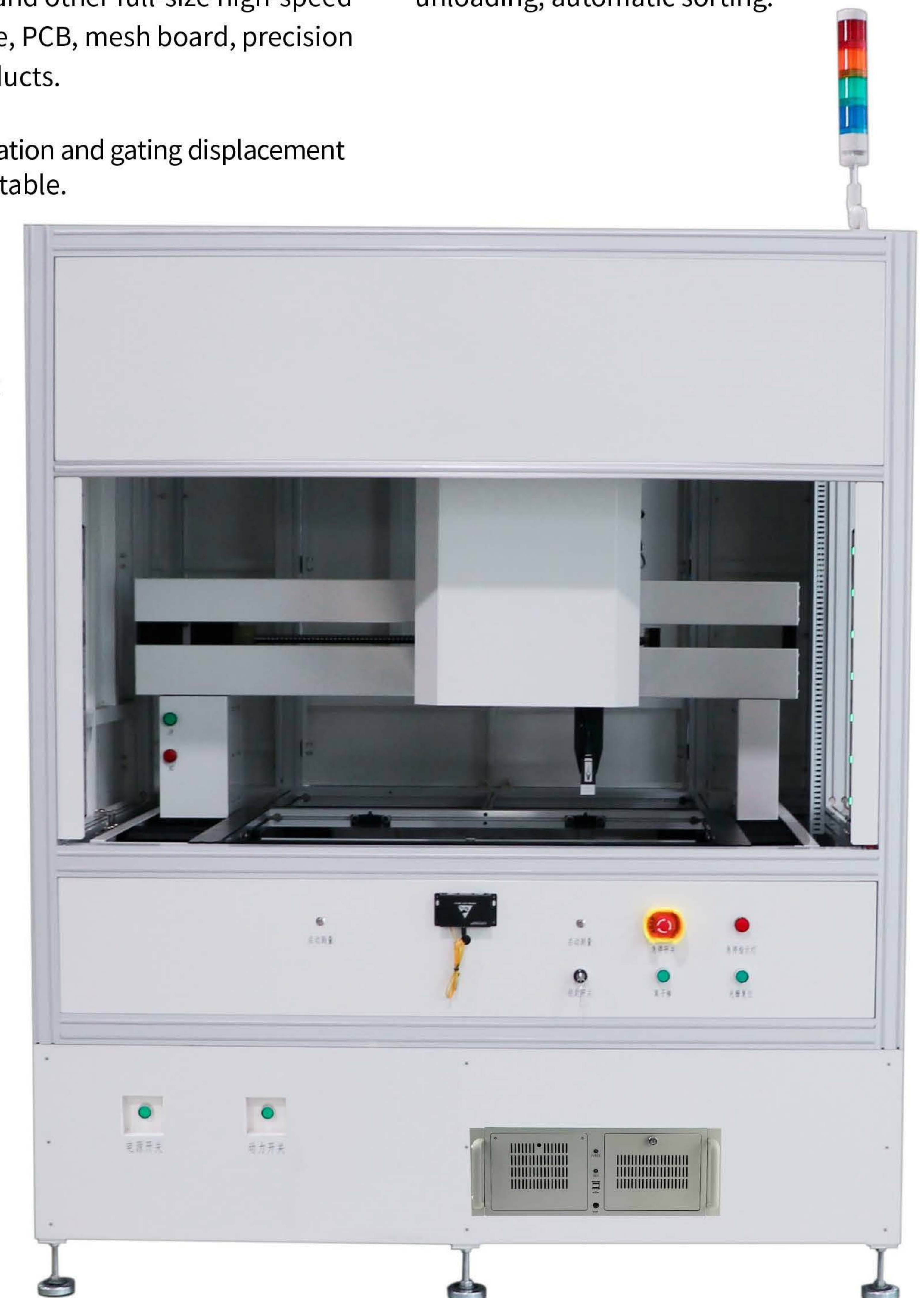
Specification

MODEL	FMV300	FMV400	FMV500	FMV600	FMV800
Measuring range _(mm)	300×200	400×300	500×400	600×500	800×600
Table size _(mm)	450×350	530×450	620×530	760×620	960×760
Max Loading Weight	30KG				
Lens resolution	20 MP				
Field of view	50~190mm				
Magnification	10X~300X				
Working distance	90mm				
X/Y Accuracy	X/Y<(3+L/200)μm				
Grating scale resolution	0.1 μm				
Speed	<700mm/s				
Repeatability	<2 μm				
Power Source	220V (AC) 50~60HZ				
Dimensions _(mm)	680×435×1700	950×780×1820	1250×950×1820	1350×1080×1850	1700×1300×1850
Net Weight	120KG	360KG	600KG	850KG	1100KG

*Custom Base your requirement

Features

- FMV series products use large-field image measurement and image stitching technology to realize the position, size, shape, hole location, area and other full-size high-speed measurement of line, frame, PCB, mesh board, precision sheet metal and other products.
- It can be expanded and customized for online measurement, automatic loading and unloading, automatic sorting.
- Integrated pixel point calculation and gating displacement calculation, accurate and stable.
- In the field of vision, more than 100 size positions can be detected in one second, and the measurement efficiency is more than 50 times that of the traditional measuring equipment.



Measuring Microscope Instrument

Features

- Compatible with a range of measurement and observation needs.
- Accurate sample measurement delivered through advanced measuring technology.
- The quick release system for long stroke measurements.
- Optional motorized controls.
- Precise ,Simpler, more efficient operation.

Specification

MODEL	MU400	MU800	MU1200	MU1500	X2010	X3020	X4030	X5040
X-Y Stroke (mm)	100×100	200×150	300×200	400×300	200×100	300×200	400×300	500×400
Z Focus Stroke (mm)	200							
X/Y Grating scale	Boxed glass Grating scale, resolution 0.5um							
Light Sources	White LED transmission condenser light source							
X/Y Guide Rail	V-guide rail							
Z Guide Rail	P Class linear guide rail							
X/Y Transmission	Open and close nut + precision lead screw				Toothless nut + smooth rod			
Z Transmission	Coarse/fine gear focusing module				T - screw			
Body Flatness Accuracy	≤10μm							
X/Y Axis Accuracy	2.5μm+L/150 (L-is the measured length,unit mm)							
Z-Axis Accuracy	2.0μm+L/50 (L-is the measured length,unit mm)							
Calibration Scale	JINUOSH							
Glass Loading Capacity	20KG							
Power Sources	220V (AC) 50HZ							

- Imaging of extremely minute samples enabled by outstanding optical technology.
- Quick and accurate non-contact optical measurement.
- Digital video camera head (Optional)
- Illumination intensity can be adjusted for most convenient and suitable illumination.

MU Series



Optional Specifications

Z Axis	250mm 300mm 350mm 400mm(Other options)
Z Electric Assembly	Z axis electric assembly +Z axis electric handle
Polarize	Fixed polarize plate 360° Polarize board
Differential Interference Prism	Different Brand (Option)
Objective Lens	5X/10X/20X/50X/100X
Z Grating Scale	Boxed glass grating scale, resolution 0.5μm Boxed glass grating scale, resolution 0.1μm
X/Y Grating Scale	Boxed glass grating scale, resolution 0.1um
External Reset Button	External reset button
Digital Counter	Two axis counter/Three axis counter/DP300 counter/Other
Camera	Atlas 1/2 inch, 2 megapixel HD color camera, HDMI interface Atlas 1/2 inch, 2 megapixel HD color camera, HDMI port + measurement function HIKVISION 2/3 inch, 3.2 megapixel, high resolution color camera, gigabit network interface BASLER 1/3 inch, 1.4 megapixel, high resolution color camera, gigabit interface BASLER 2/3 inch, 5 megapixel, high resolution color camera, gigabit interface
Optical Filter	Red/green/blue/white light
Rotating base	Standard rotating base

*Custom Base your requirement

X Series



Measuring Microscope Instrument

MMI Series



Specification

MODEL	MMI-300	MMI-400	MMI-500	MMI-1200	MMI-1400	MMI-1800	MMI-2000	MMI-2200	MMI-2700
Granite size (mm)	580×360	720×490	900×610	\	\	\	\	\	\
Stage Glass Size (mm)	348×238	448×340	548×448	\	\	\	\	\	\
X-Y-Z Stroke (mm)	300×200×150	400×300×150	500×400×150	1200×1000×150	1400×1100×150	1650×1100×150	1850×1150×150	2150×1350×150	2650×1500×150
Operational height	\			950mm					
Max Loading Weight	20KG								
Optical system	Basler 5MP HD Color digital camera								
	Trinocular Head								
	Eyepiece CFI 10X(option crosshair)								
	Nosepiece :5 position of objectives								
	Polarizer/Analyzer								
	DIC prism								
	Objective lens:2.5X/5X/10X/20X/50X/100X								
Field accuracy	2.5X/5X/10X/20X <1um ,50X <0.5um								
X/Y Accuracy	Linear Accuracy: (3+L/200)μm <small>(L=length between two arbitrary points mm)</small>								
	Vector Accuracy: (3+L/200)μm <small>(L=length between two arbitrary points mm)</small>								
Z Accuracy	≤5μm (Standard block test)								
Illumination Unit	White LED transmission light source								
	White LED 7 ring 8 region 32 phase programmable ring light source								
Power Source	220V (AC) 50HZ								

Optional Specifications

Z Axis	250mm 300mm 350mm 400mm(Other options)
Microscope Optical Brand	NIKON,ZEISS
Lens	Polarized light
	Motorized zoom lens 0.58-7.5X
	Motorized zoom lens 0.58-7.5X + coaxial light source
Touch Probe	Renishaw or Other options
	Keyence-LK-G30
Non-contact displacement sensor	Omron ZW-7020S

*Custom Base your requirement

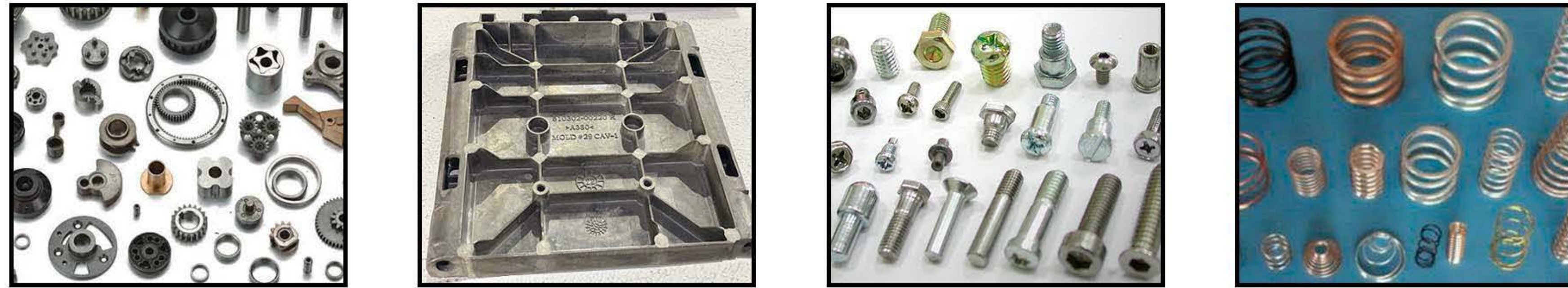


Application

Our product suitable for all application fields of 2D plane size measurement.

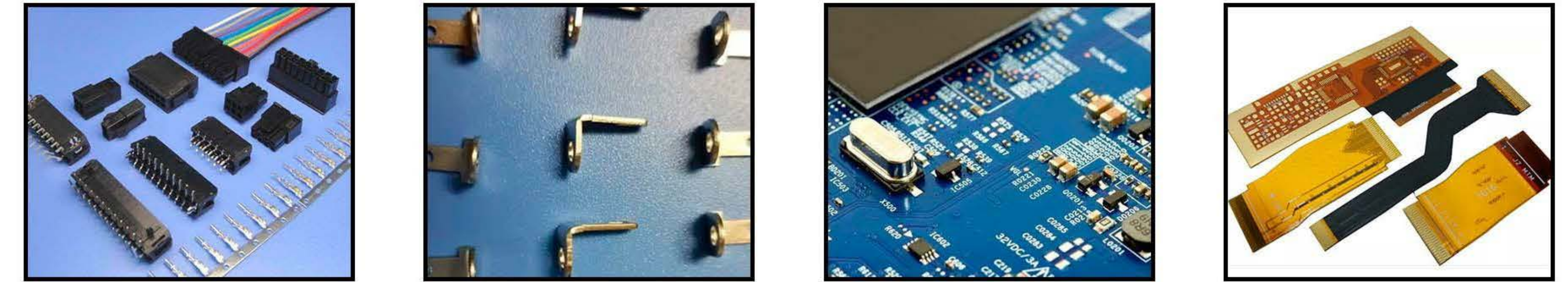
■ Hardware industry

Including hardware parts, die casting, screws, springs, gears, etc



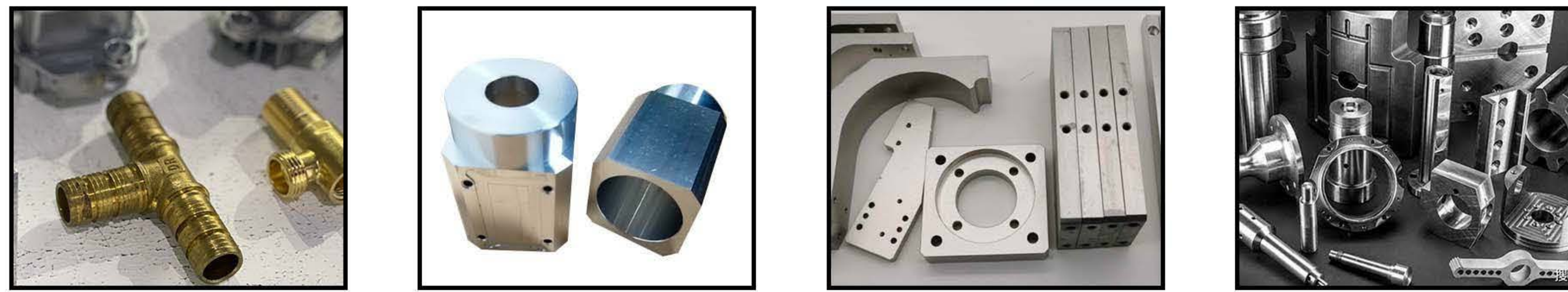
■ Electronic industry

It contains connectors, terminals, chips, switches, PCB, and FPC



■ Machining industry

Including car, milling, grinding, CNC and other mechanical parts, etc



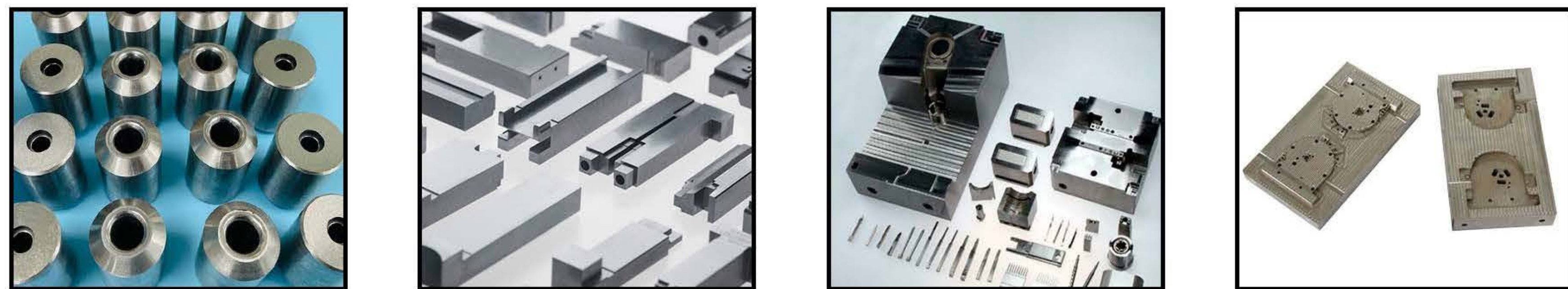
■ Automobile industry

Including auto parts, auto modules



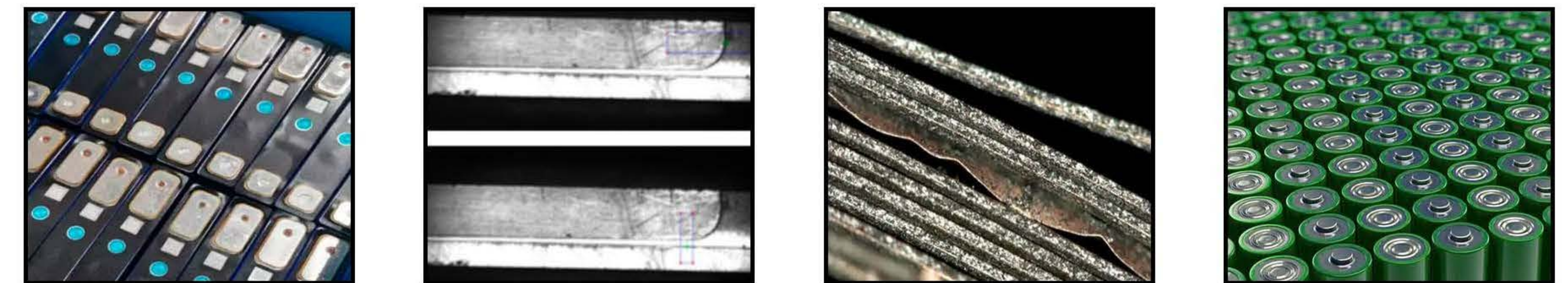
■ Mold industry

Including mold products, mold parts, mold inserts, mold kernel, mold core



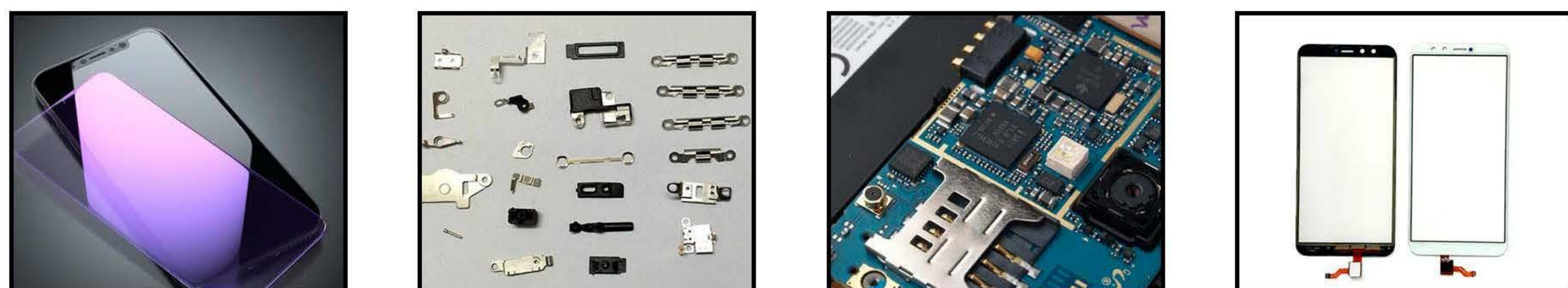
■ New energy industry

Testing lithium battery cover size, burr, core cover weld detection, surface defects, etc



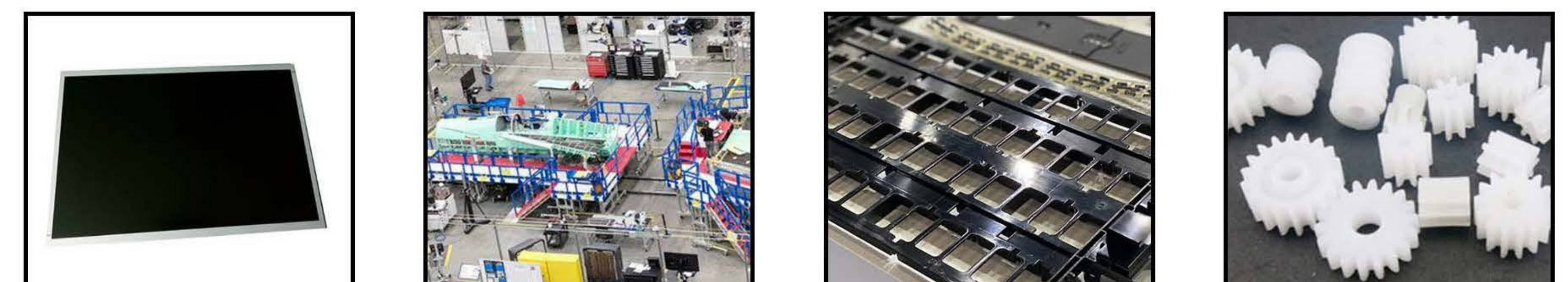
■ 3C industry

It includes glass cover plates, spare parts, chips, circuit boards and touch screens of mobile phones, ipads ,etc



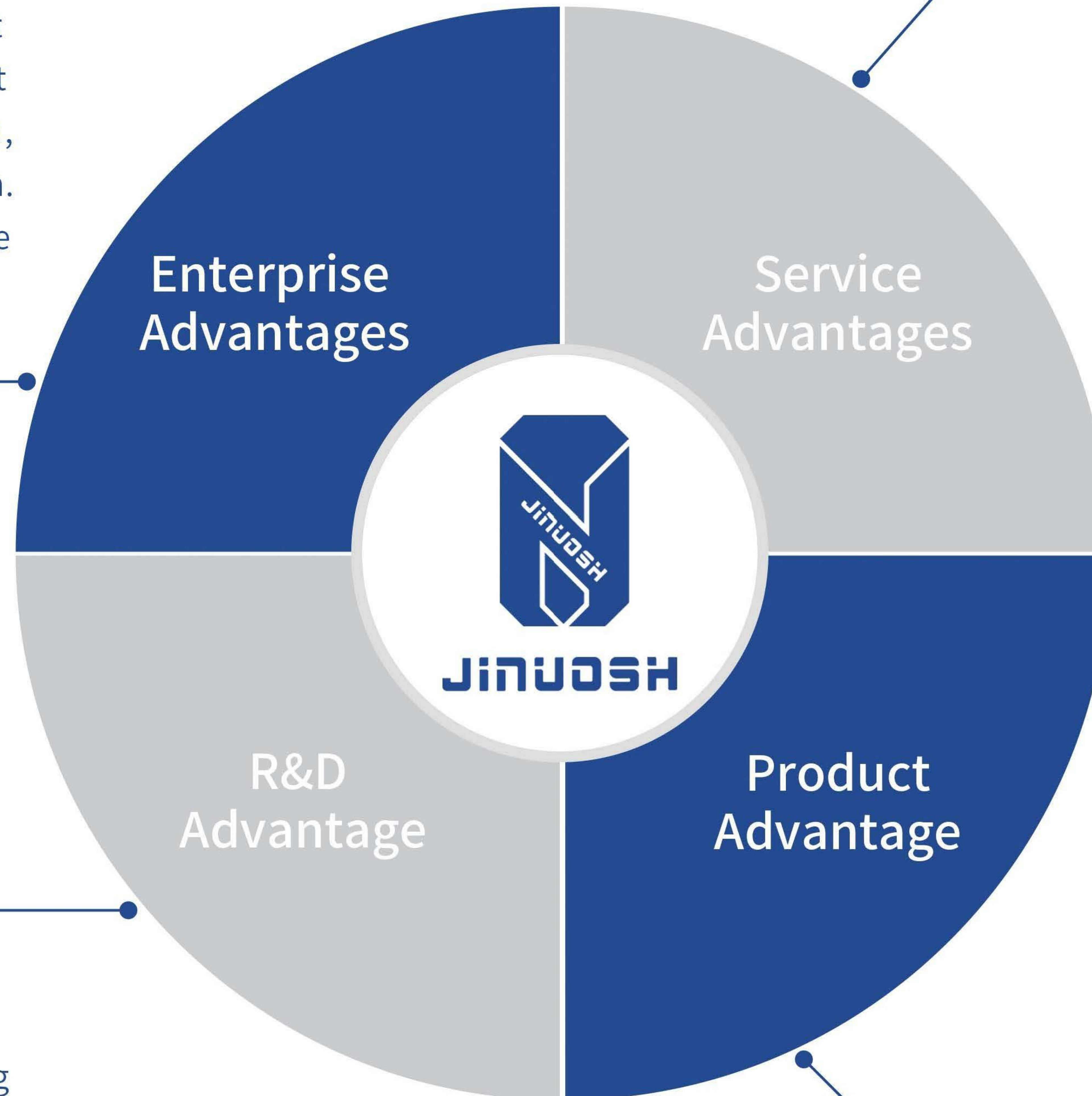
■ Other industries

Including LCD, aerospace, plastics, die casting, die cutting, stamping, automation, scientific research , education

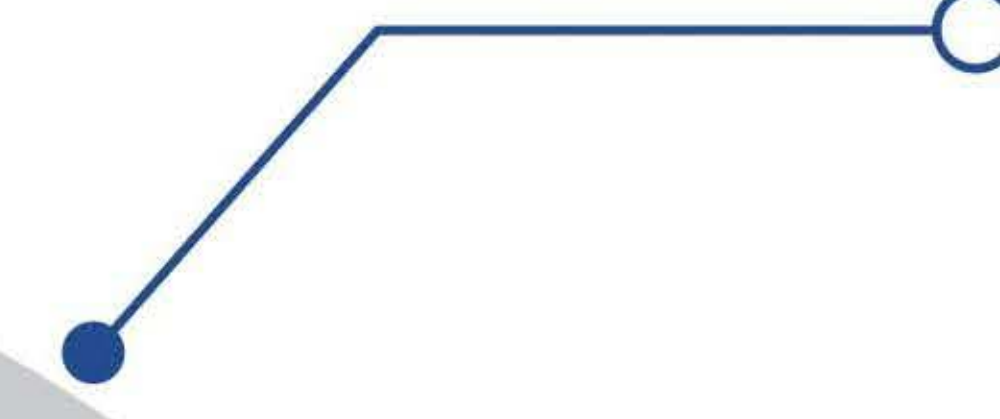


Why choose JINUOSH ?

Guangdong Jinuosh Technology Co., Ltd.
We are focused on testing machine, set optical video measuring instrument research and development, design, production, sales, after-sales integration. Stable production capacity and large output.



Fast service: 30 seconds response, 24 hours to solve problems, professional online and offline services. fix your problem as soon as possible. Affordable renewal contract: over insurance machine signed renewal contract, during the period to provide a number of free services and discounts.



R&D team-work, focusing on vision testing instrument, we have achieved design and software patents; we are offering the best solutions for customers.



we fulfill the requirements from market, taking more customized equipment cases; we are promoting and extending, looking forward to cooperate with you soon !





The product sales range covers over 25 countries, including Pakistan, Vietnam, France, Belgium, Russia, Thailand, India, UK, Australia, Republic of Belarus, Turkey and other countries and regions, with wide business scope.

Headquarters factory in Dongguan, China, which is known as the world factory, ensures the product supply chain and product quality.

- Headquarters Factory (Dongguan, China)
- Distributors (Vietnam, Thailand, Malaysia...)
- Scope of business (France, Belgium, Saudi Arabia...)



WWW.JINUOSH.COM

JINUOSH

GUANGDONG JINUOSH TECHNOLOGY CO., LTD
Web: www.jinuosh.com Email: sales1@jinuosh.com
ADD: Dongguan City, Guangdong Province, China