



G SERIES NEW MODEL



Web: www.jinuosh.com



广东谨诺科技有限公司

GUANGDONG JINUOSH TECHNOLOGY CO.,LTD

COMPANY PROFILE

Guangdong Jinuosh Technology Co., Ltd. is a high-tech enterprise engaged in the research and development, production and sales of video measuring machine, flashing measuring machine, measuring microscope and other testing equipment, with a technical team and management team specializing in the development of advanced products and process research.

Always follow: "customer first, quality first, perfect" quality policy, whole-heartedly for domestic and foreign customers to provide beautiful shape, excellent performance, reasonable price, user satisfaction' s testing equipment products, the products are mainly exported, our company has won the trust and praise of many customers by providing all-round assistance, high quality and sincere service. The company has gradually established the leading position in the testing instrument industry in China. In the domestic and international markets to establish a good brand, with its strong strength and good reputation in the industry, to become the world's top brands of excellent partners.



G Series



G series, designed for high precision and large size measurement. Using the moving bridge structure, the measuring workpiece is fixed, to ensure the measurement accuracy and stability, can meet the testing requirements of various complex products. There are many kinds of large size measurement methods, which can be roughly divided into two categories; The first type is contact measurement and the second type is non-contact measurement.

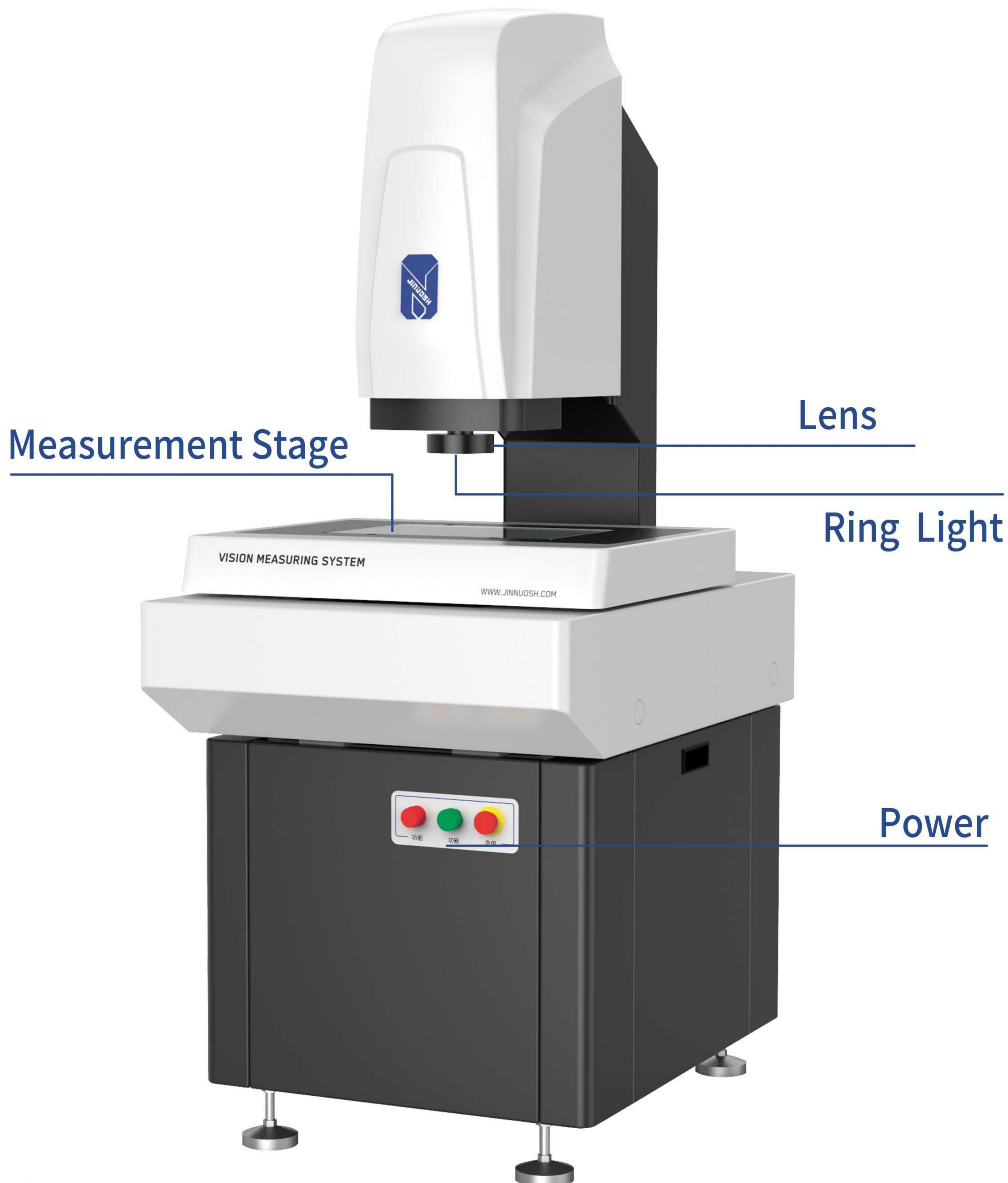
Features

- High-resolution high-definition color camera.
- High precision automatic measurement, automatic lens, high precision automatic variable times.
- Joystick control automatic functions: automatic focus, automatic measurement, automatic edge, lamp light adjustment automatically, automatic switch ratio, ensure the high efficiency of measurement.
- CNC program high editable.
- Air bearing guide rail, no wear and tear; Precision grinding lead screw, high speed, no clearance, sensitive and reliable, accurate positioning, high motion precision.
- Four axis automatic loop control.



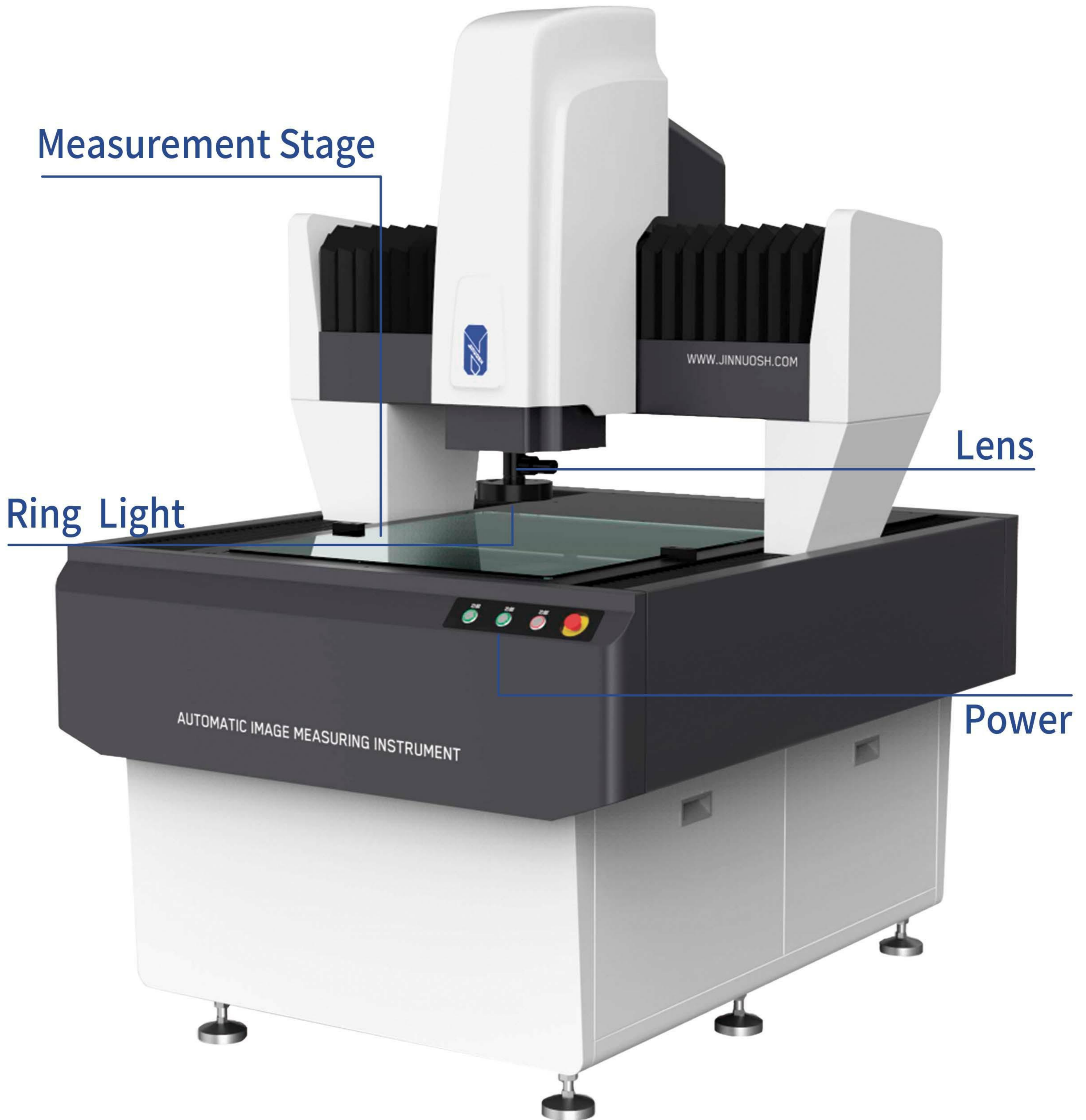
Structure

Column type



Structure

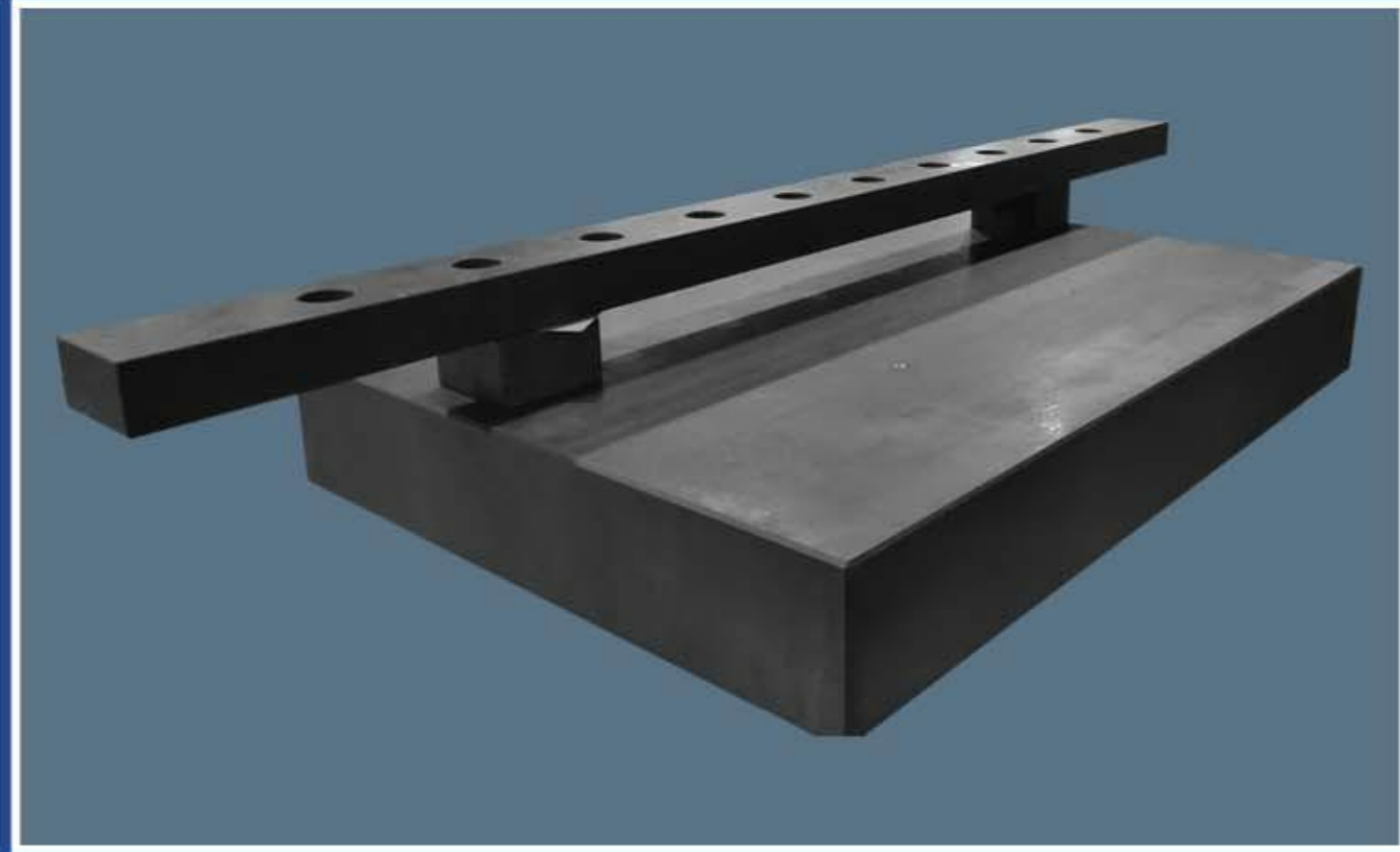
Bridge type



Hardware

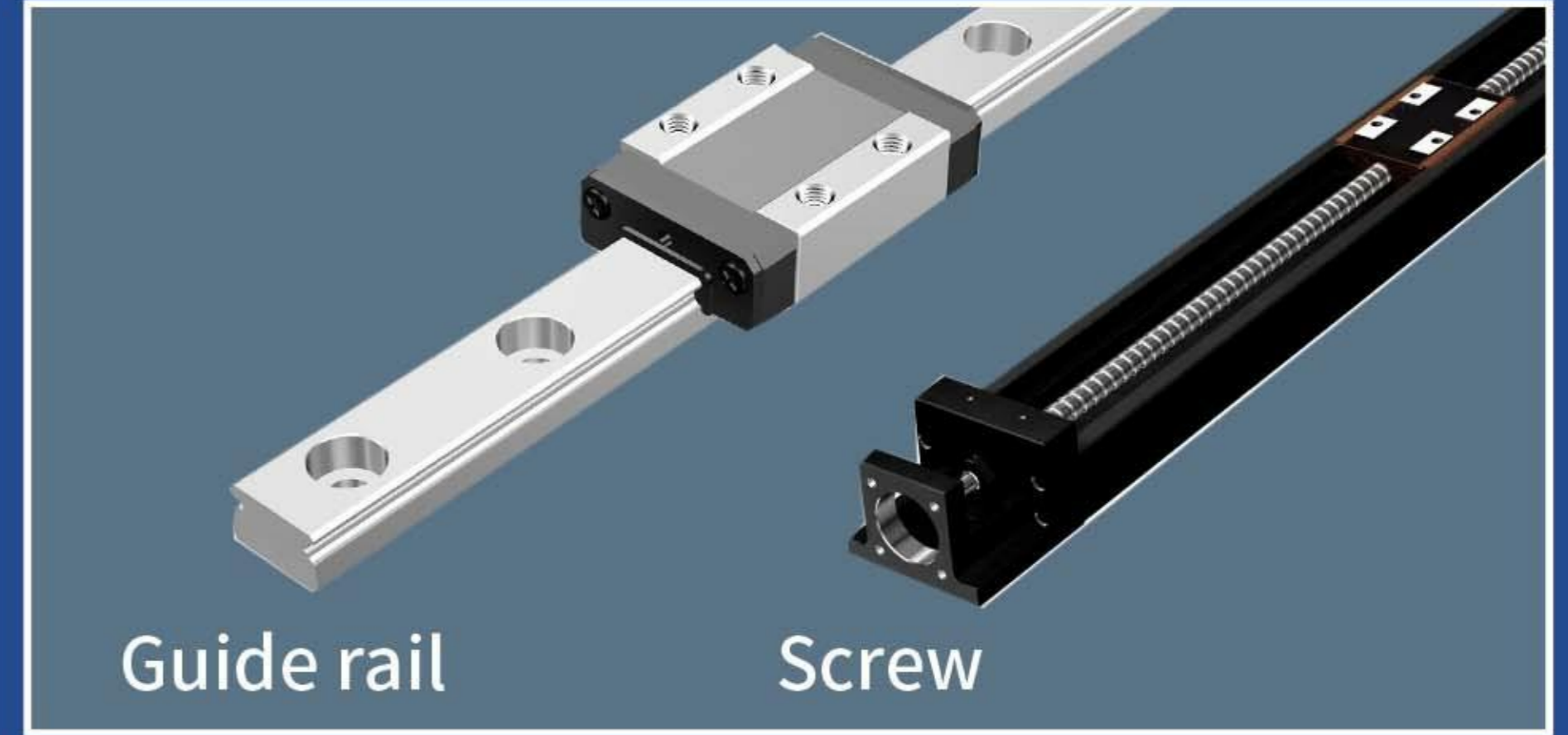
■ Structure

High precision granite structure, to ensure high rigidity and stability; more suitable for the measurement of fragile work piece and thin work piece.



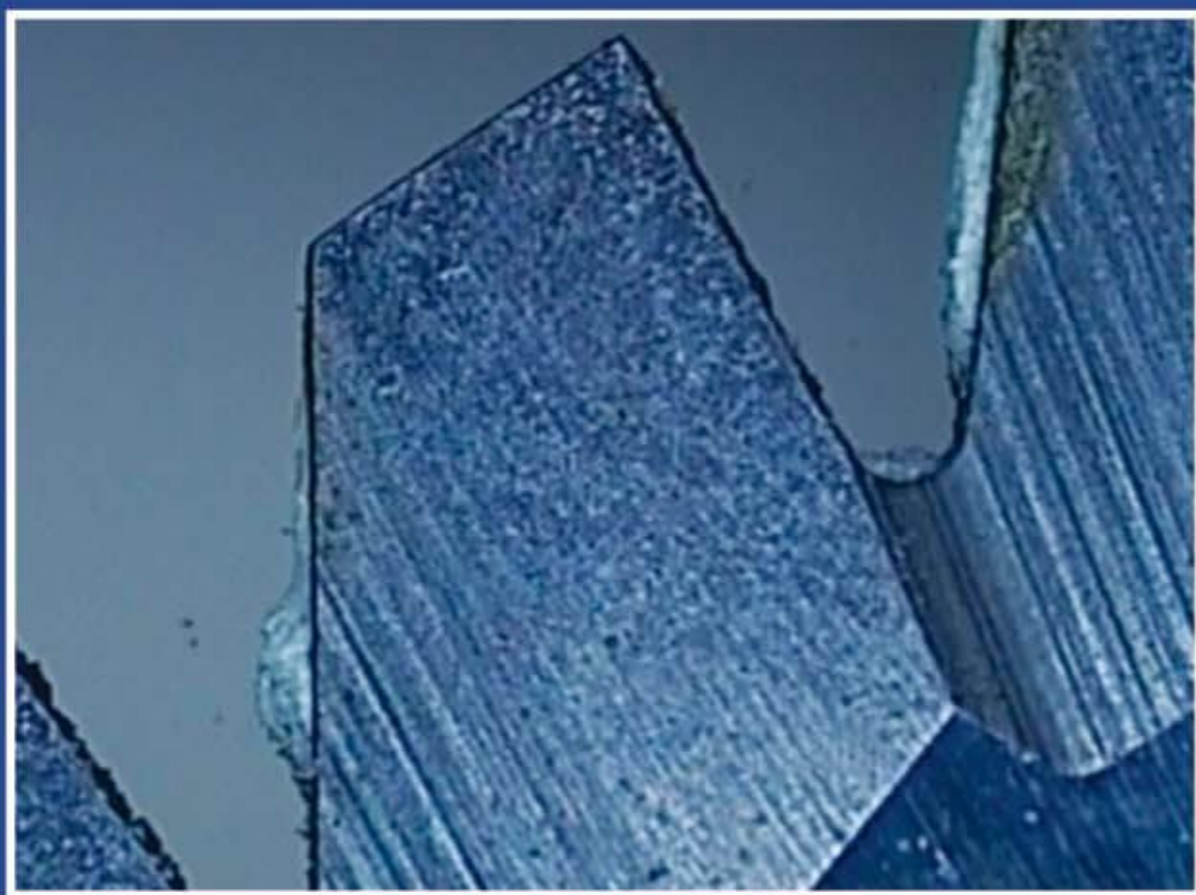
■ Guide Rail and Screw

THK, High precision Guide rail, Grade P linear guide, Precision V-shaped guide rail etc High precision Grind ball screw etc.



■ Wide ranging zoom optics streamline dimensional measurements.

Efficient program creation and dimensional measurement are achieved as magnification can be changed at high speed, whilst maintaining highly accurate measurement. So more convenient to test precision sample' s size.



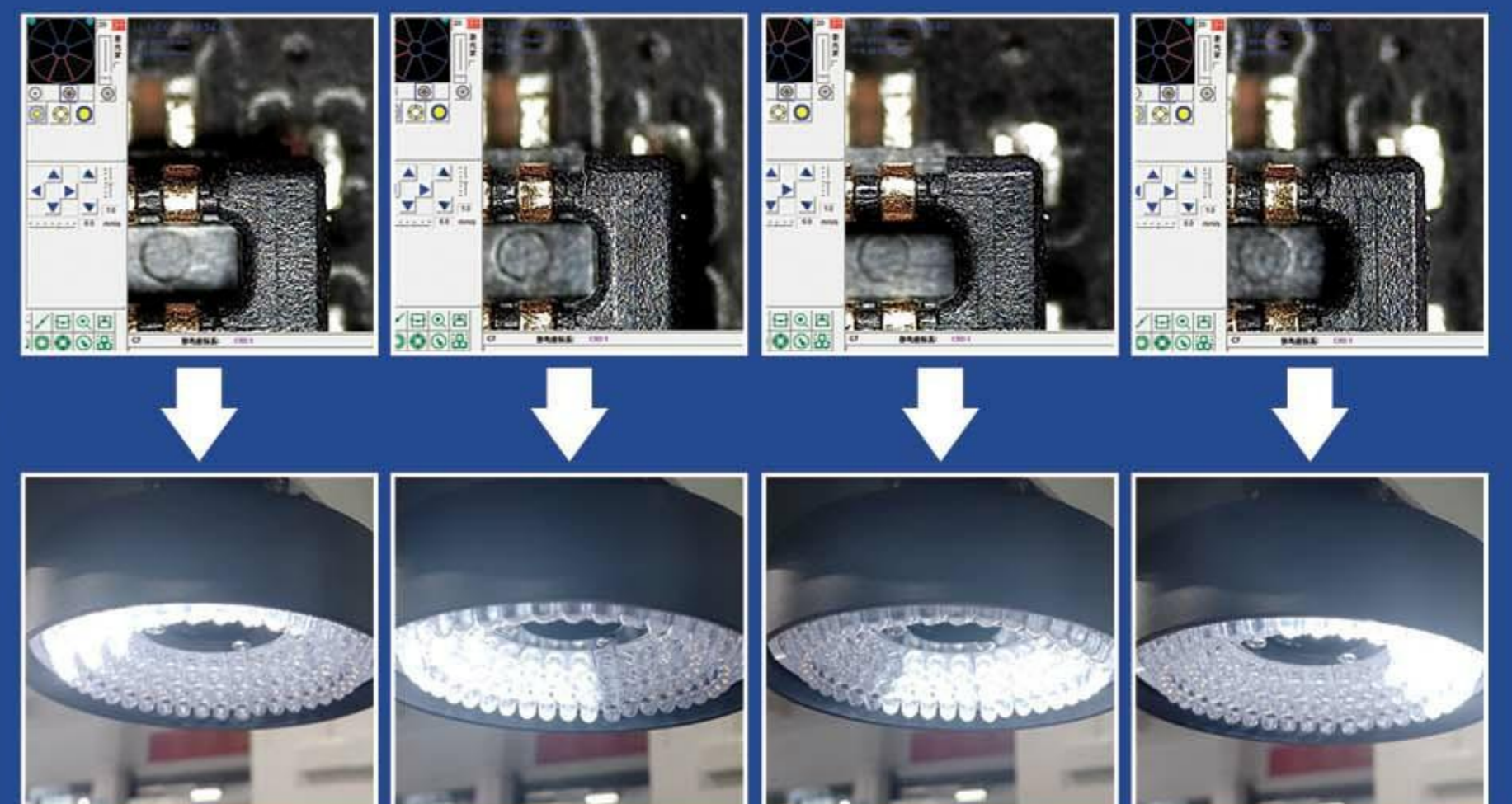
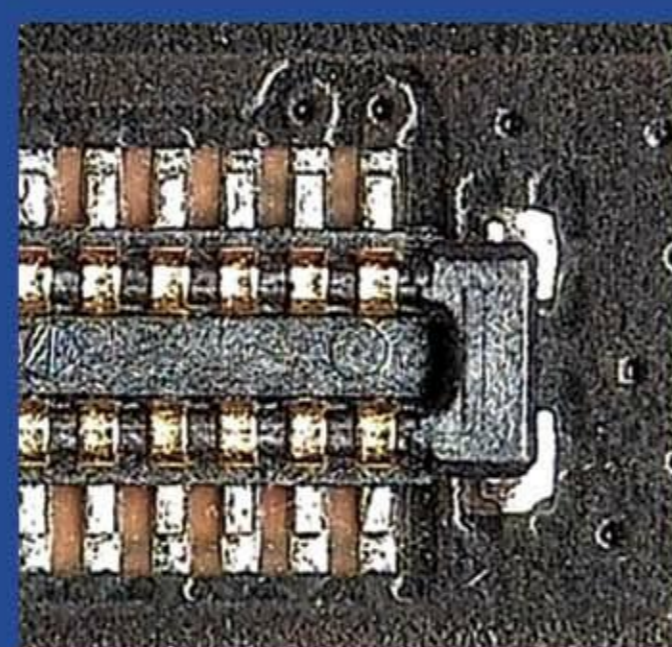
■ Joystick

Use Joystick more convenient ,more fast



■ Light system

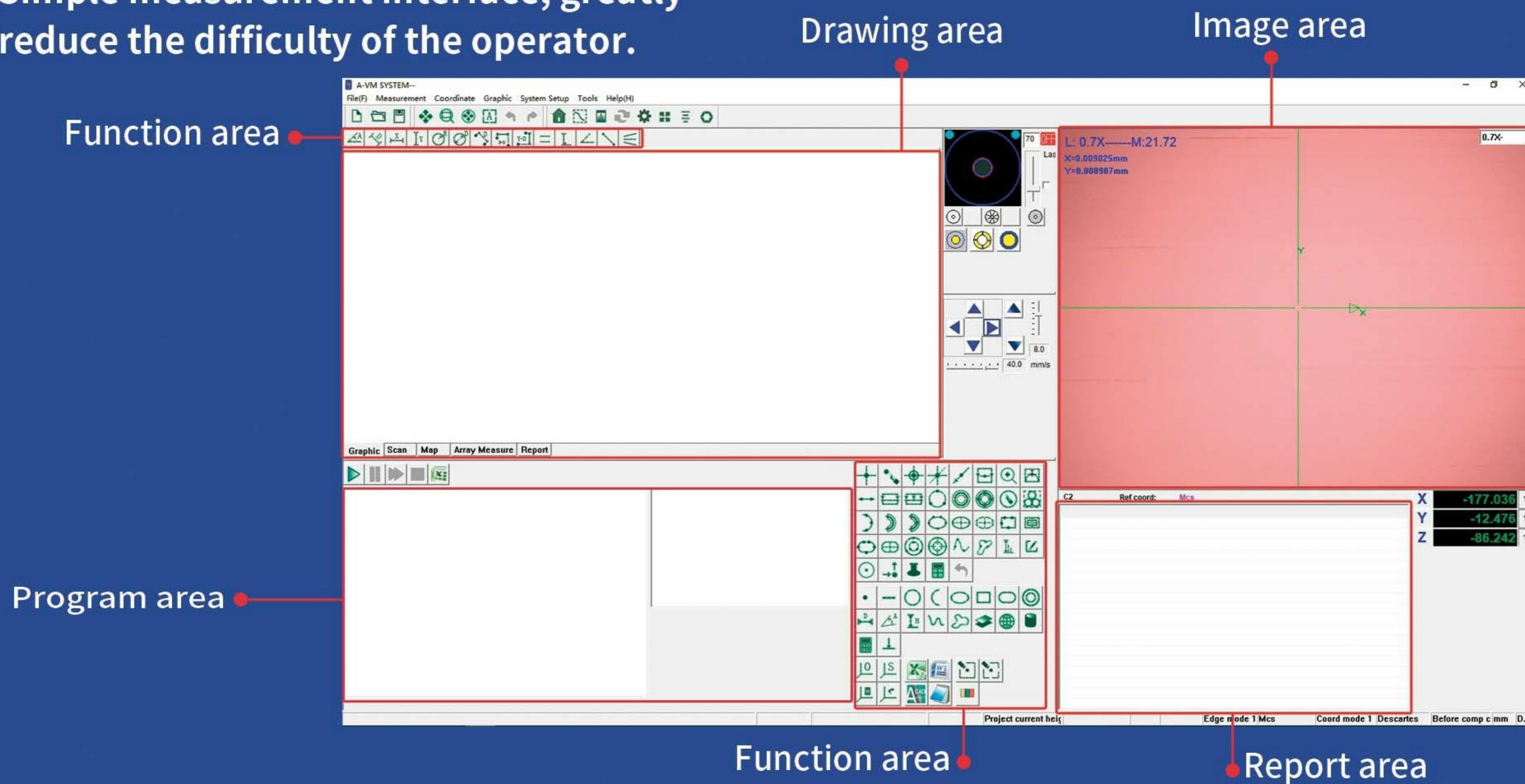
By assembling two adjustable light sources, not only the workpiece profile can be observed, but also the surface shape of the opaque workpiece can be measured. The cold light source system can avoid the error caused by the deformation of the workpiece due to heat.



*Effect of Lighting from Different Angles under the Same Condition.

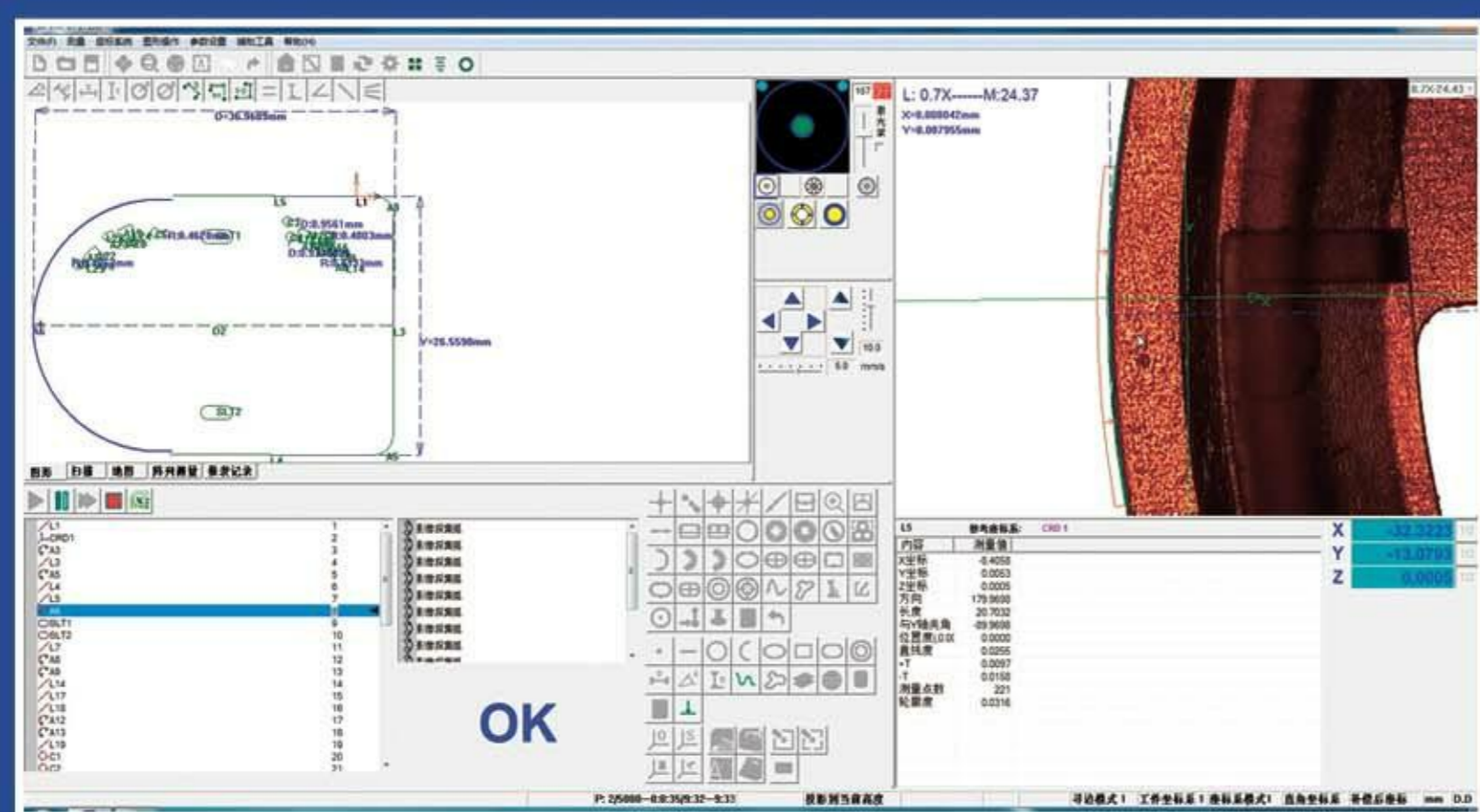
Software

- Simple measurement interface, greatly reduce the difficulty of the operator.



Multi-functional software

Switch into CNC program, quickly match measurement, navigation image "real-time navigation" function, with the fastest speed to locate the work piece to measure the position for efficient programming.



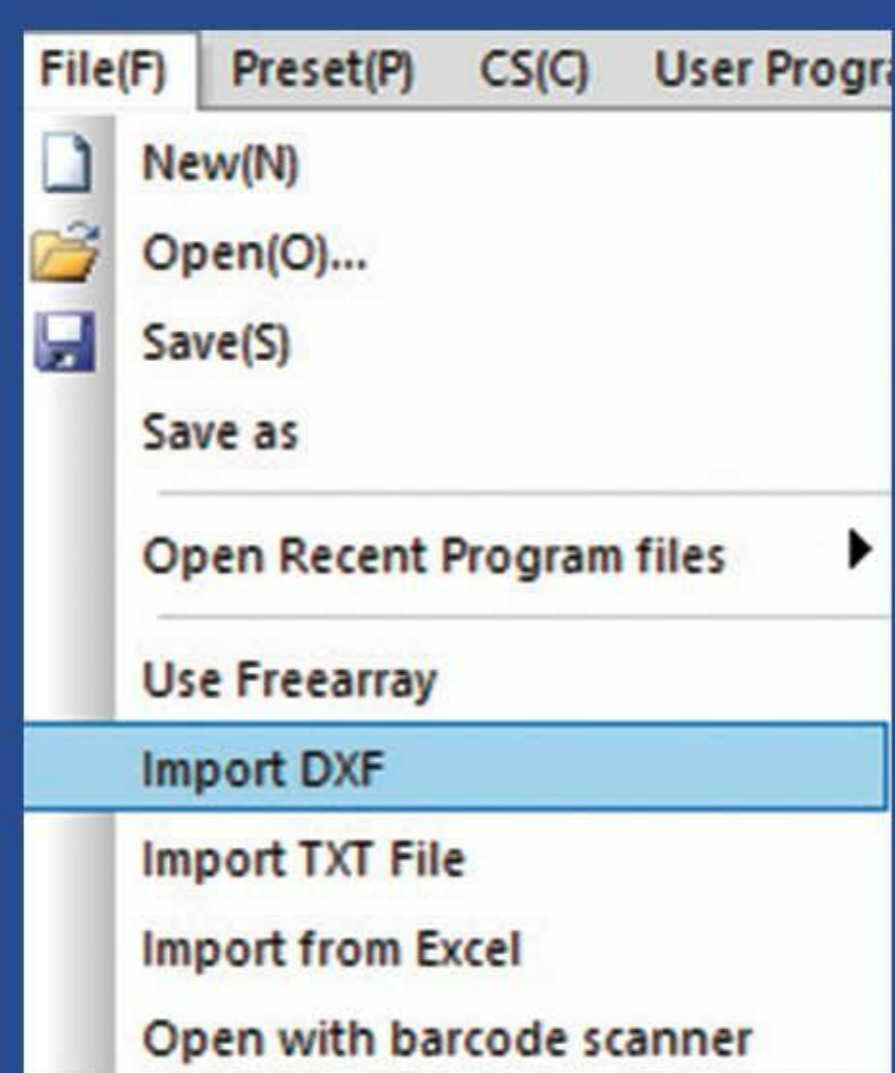
Intelligent edge

Reduce the error caused by personnel improper operation.



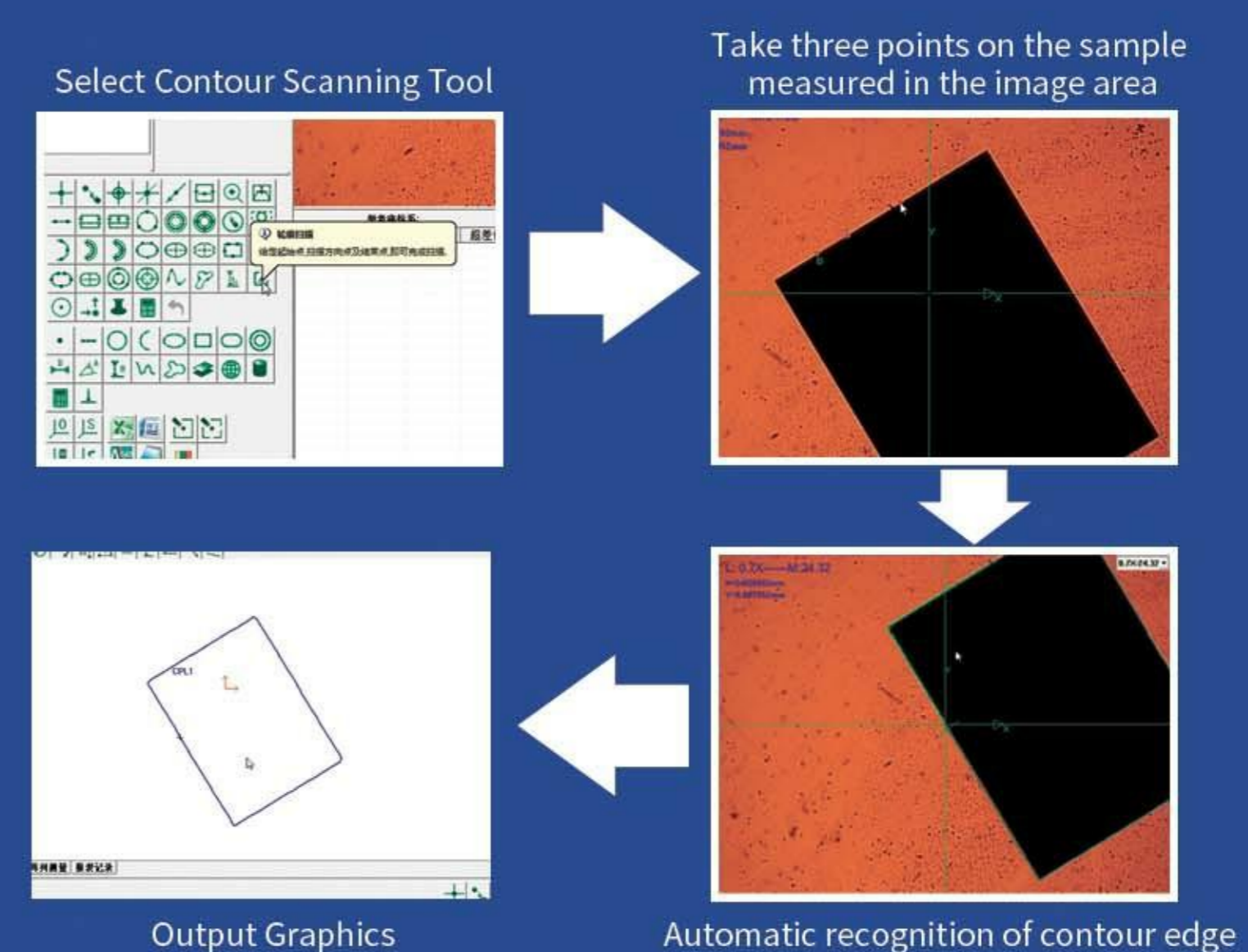
Graphic correlation

Software can import CAD files, can realize the standard drawing file and workpiece comparison function.



Scan function

It can scan the irregular contour of the work piece automatically and obtain the 2D figure of the work piece in reverse.

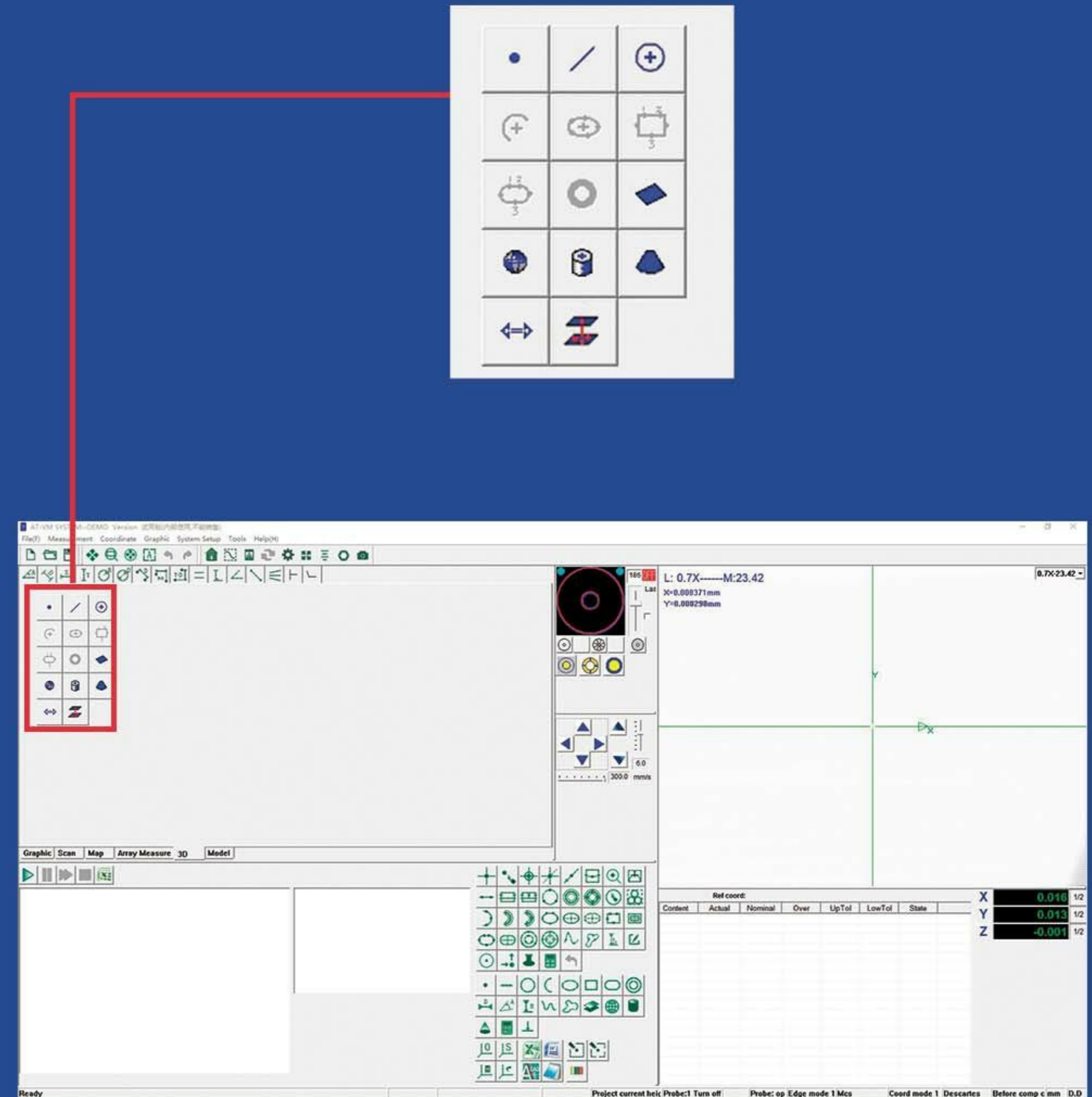


Optional

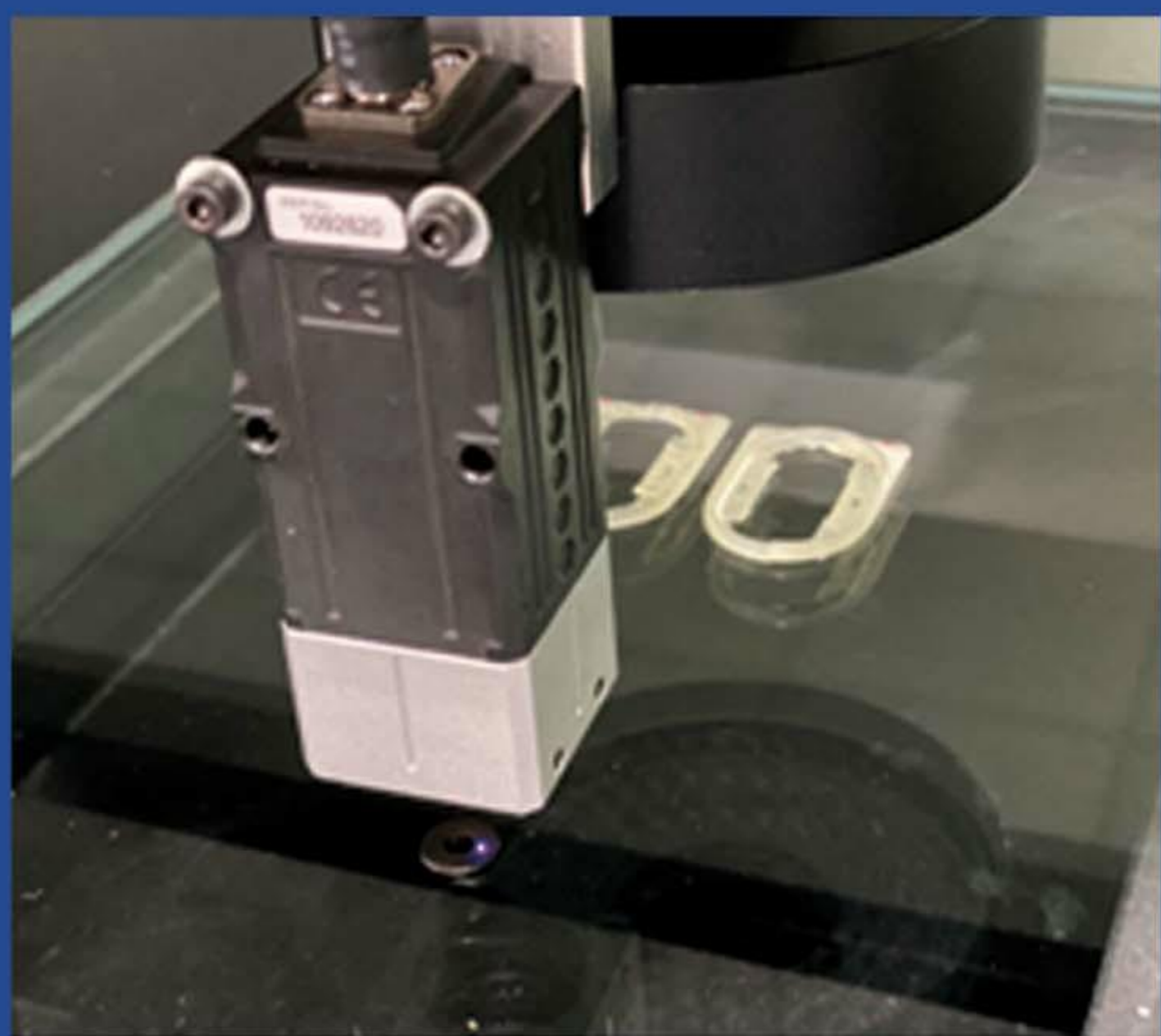
Optional probe can have 3D measuring function, intuitive 3D graphic display, let users improve the efficiency of probe measurement.



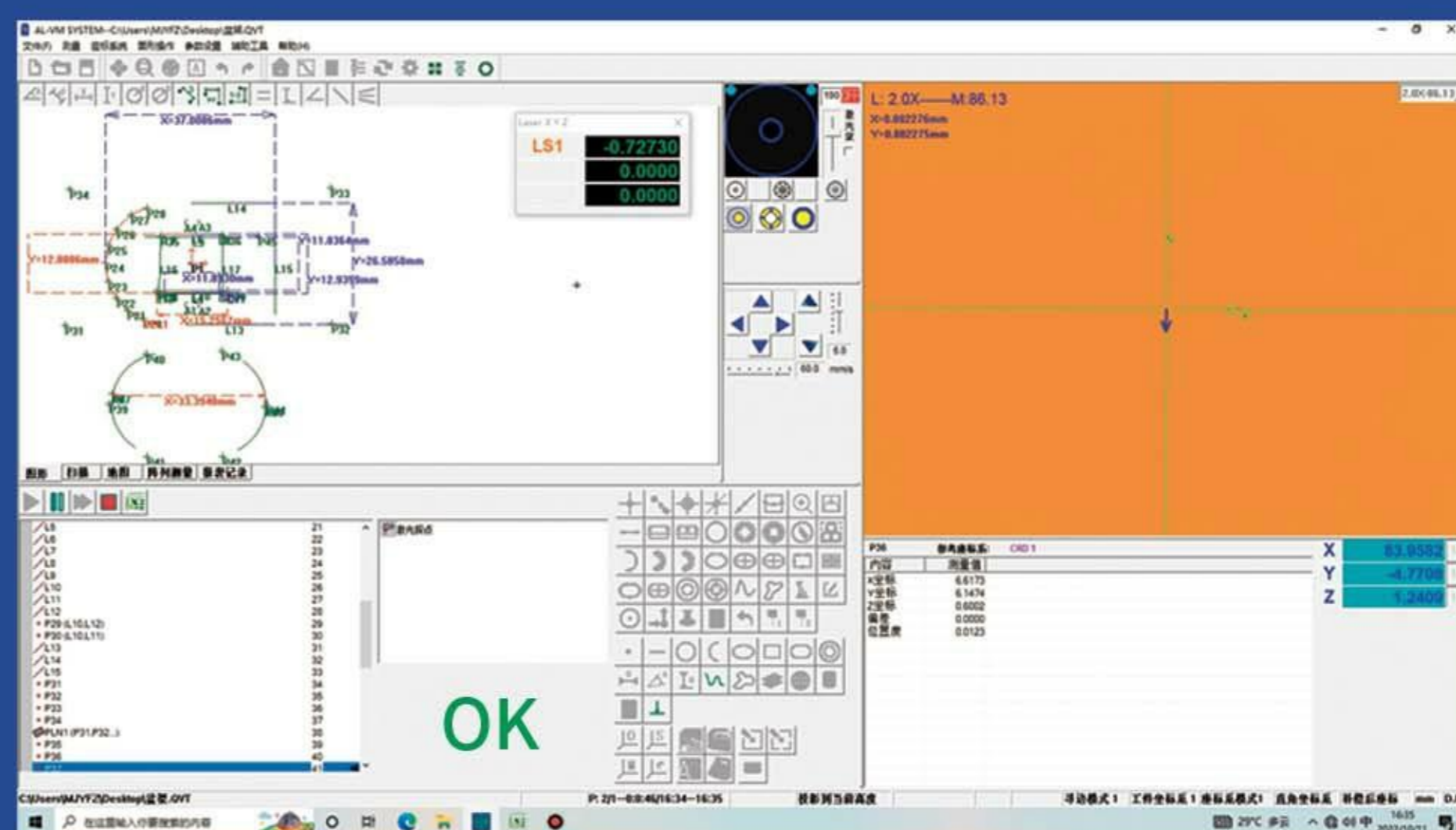
Renishaw MCP probe



Confocal white light sensor is selected for laser laser, and the machine is upgraded to laser scanning measurement system.



Laser



Specification

Column type

MODEL	G300	G400	G500
X-Y-Z Stroke <small>(mm)</small>	300×200×200	400×300×200	500×400×200
Granite size <small>(mm)</small>	580×360	720×490	900×610
Stage Glass Size <small>(mm)</small>	348×238	448×340	548×448
Max Loading Weight	20KG		
Observation and Image	1/1.7" GIGE 2MP Color digital camera		
	Working distance:90mm		
	Zoom Lens:0.7X - 4.5X auto zoom lens		
	Integral 6.5:1 CNC zoom optics		
	Monitor magnification :40X-245X		
	JINUOSH 3D Automatic Measurement Software		
Joystick	JINUOSH		
X/Y Accuracy	Linear Accuracy:(1.7+L/200)μm <small>(L=is the measured length,unit mm)</small>		
	Vector Accuracy:(3.0+L/200)μm <small>(L=is the measured length,unit mm)</small>		
Z Accuracy	(3.0+L/100)μm <small>(L=is the measured length,unit mm)</small>		
Illumination Unit	Green LED transmission light source + coaxial light source		
	White LED 7 ring 8 region 32 phase programmable ring light source		
Power Source	220V (AC) 50HZ		
Dimensions <small>(mm)</small>	770×900×1610	875×1142×1591	1015×1372×1596
Net Weight	330KG	408KG	510KG

Specification

Bridge type

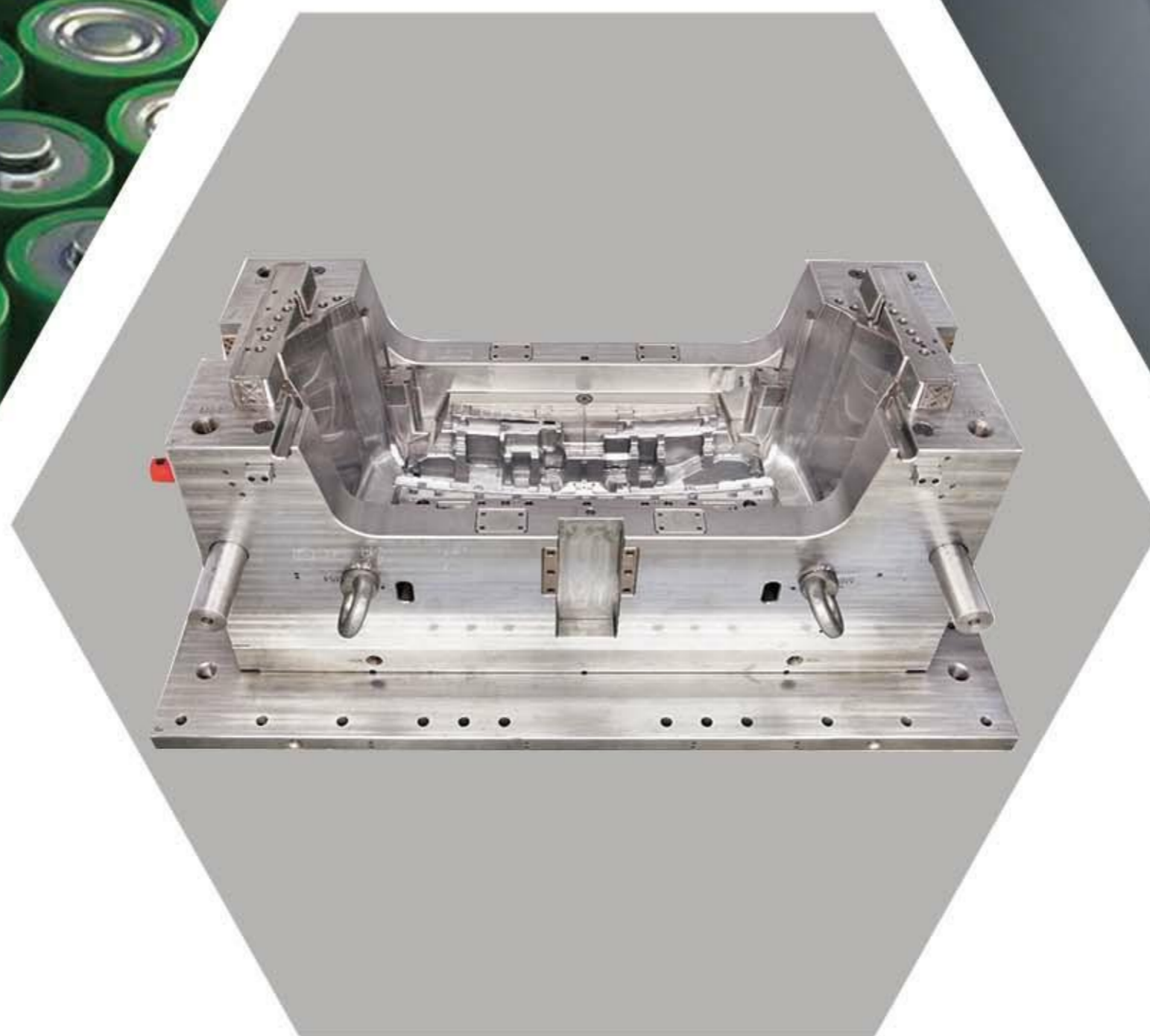
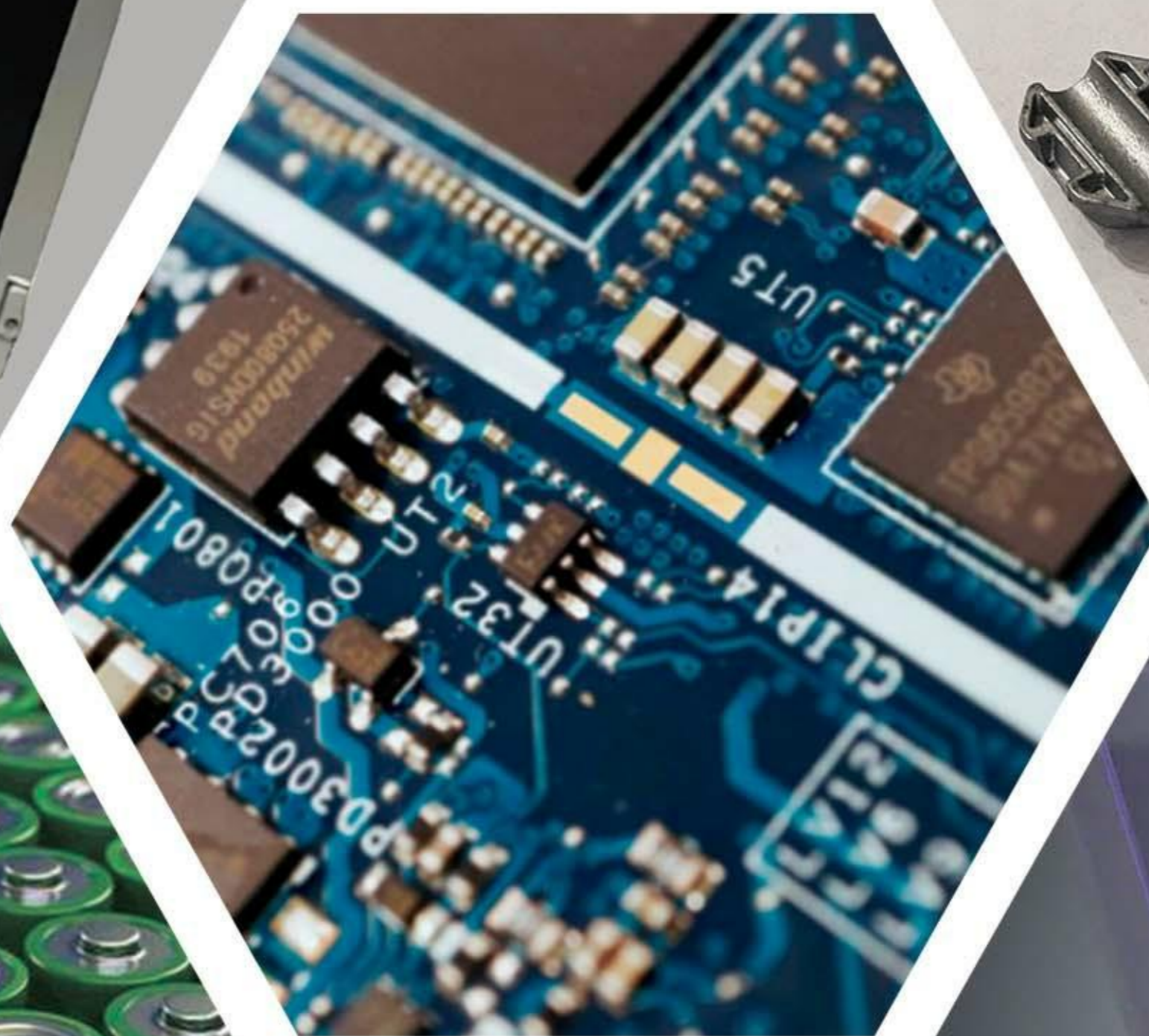
MODEL	G650	G850	G1000	G1200
X-Y-Z Stroke <small>(mm)</small>	550×650×200	650×850×200	800×1000×200	1000×1200×200
Stage Glass Size <small>(mm)</small>	668×698	768×898	918×1048	1118×1248
Max Loading Weight	30KG			50KG
Observation and Image	1/1.7" GIGE 2MP Color digital camera			
	Working distance:90mm			
	Zoom Lens:0.7X - 4.5X auto zoom lens			
	Integral 6.5:1 CNC zoom optics			
	Monitor magnification :40X-245X			
	JINUOSH 3D Automatic Measurement software			
Joystick	JINUOSH			
X/Y Accuracy	Linear Accuracy:(2.3+L/200)μm <small>(L= is the measured length,unit mm)</small>			
	Vector Accuracy:(3.0+L/150)μm <small>(L= is the measured length,unit mm)</small>			
Z Accuracy	(3.0+L/100)μm <small>(L= is the measured length,unit mm)</small>			
Illumination Unit	Green LED transmission light source + coaxial light source			
	White LED 7 ring 8 region 32 phase programmable ring light source			
Power Source	220V (AC) 50HZ			
Dimensions <small>(mm)</small>	1140×1395×1700	1240×1595×1700	1390×1745×1700	1620×2100×1700
Net Weight	870KG	970KG	1220KG	1620KG

G Series option

	Optional Specifications
Z AXIS	250mm / 300mm / 350mm / 400mm
Lens	Polarized light
	Motorized zoom lens 0.58-7.5X
	Motorized zoom lens 0.58-7.5X + coaxial light source
	Motorized zoom lens 0.58-7.5X + coaxial light source + polarized light
Touch probe	RENISHAW
Non-contact displacement sensor	KEYENCE-LK-G30 OMRON ZW-7020S
Customized max stroke	2500MM

Application area

■ HARDWARE INDUSTRY, CAR INDUSTRY, PHONE INDUSTRY, NEW ENERGY INDUSTRY, LITHIUM BATTERIES, AEROSPACE INDUSTRY, BEARINGS, HIGH PRECISION ACCESSORIES, PHONE COVER, LCD SCREEN, PCB, FPC, SMT, MACHINERY, PRECISION STAMPING PARTS, AUTOMATION, DEFECTS AND MEASUREMENT, SCIENTIFIC RESEARCH, EDUCATION.





The product sales range covers over 25 countries, including Pakistan, Vietnam, France, Belgium, Russia, Thailand, India, UK, Australia, Republic of Belarus, Turkey and other countries and regions, with wide business scope.

Headquarters factory in Dongguan, China, which is known as the world factory, ensures the product supply chain and product quality.

- Headquarters Factory (Dongguan, China)
- Distributors (Vietnam, Thailand, Malaysia...)
- Scope of business (France, Belgium, Saudi Arabia...)



JINUOSH

GUANGDONG JINUOSH TECHNOLOGY CO., LTD

Web: www.jinuosh.com Email: sales1@jinuosh.com

ADD: Dongguan City, Guangdong Province, China